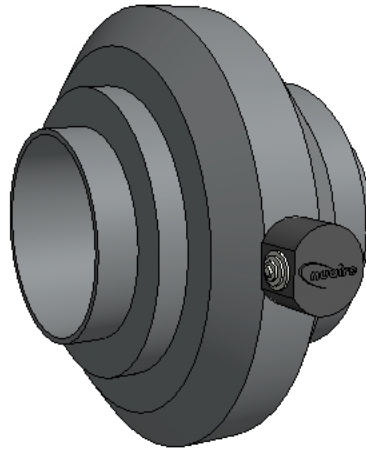


NALT Revit Model Features

1. The model uses a type catalogue so all variants of the NALT metal tube fan range can be inserted using the same .rfa file (see Read Me file attached for further info)



2. These models are face-based and initially must be inserted onto an existing face or work plane in the project .
3. If the model is inserted into the project without using the correct procedure then you will be alerted via a red box and 'DO NOT USE' wording around the model. The model code will also show this same message in the schedules. Please then refer to the additional 'Please read Me File' packaged with this family for the correct insertion procedure.

