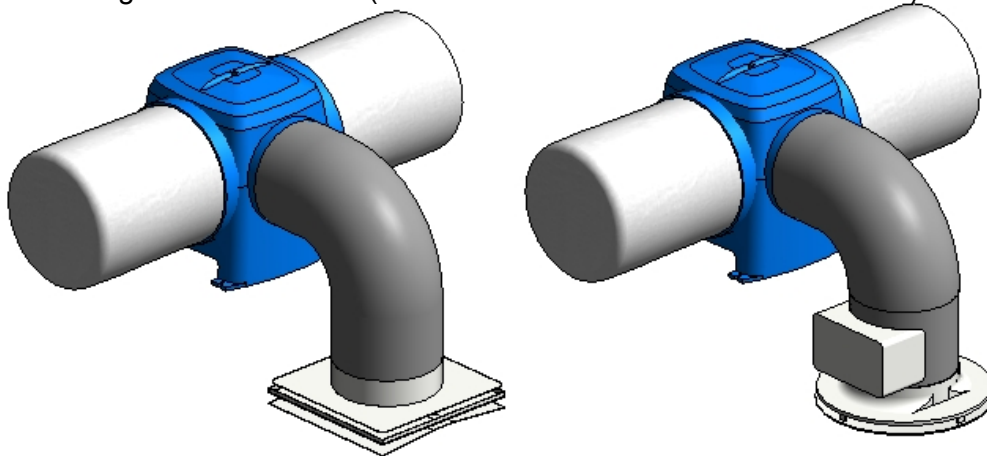


# **nuaire DRI-ECO Revit Model Features**

1. The model uses a type catalogue so all variants of the Drimaster ECO fan range can be inserted using the same .rfa file (see Read Me file attached for further info)

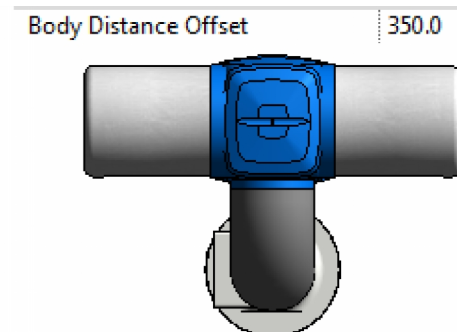
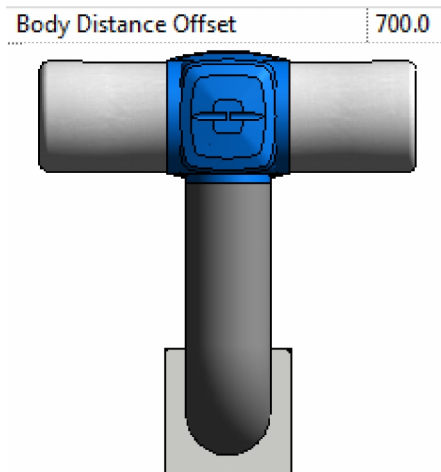


The DRI-ECO.rfa model attached includes the following options in the Model Properties Category in the Properties Window

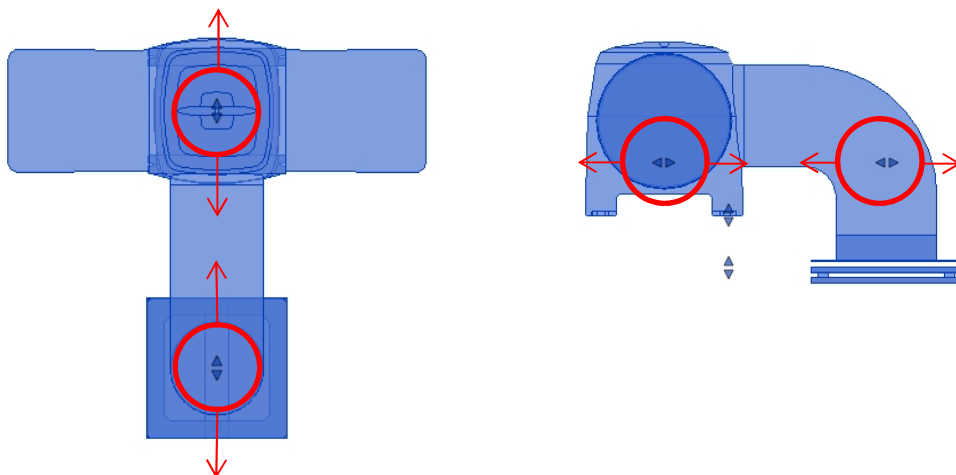
Model Properties	
Body Distance Offset	300.0
Body Height Offset	150.0

2. '**Body Distance Offset**' allows you to manually adjust the horizontal distance between the centre of the diffuser and the centre of the fan body.

To avoid collisions in the model a minimum value of 320mm has been written into the model. Any value lower than this will be ignored.



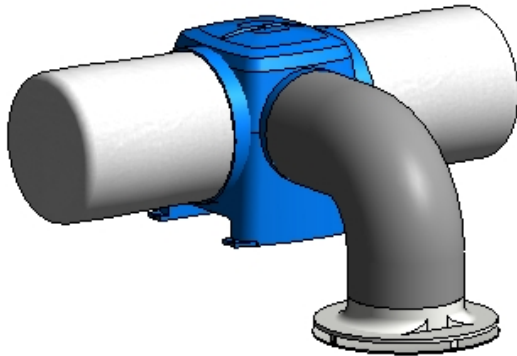
The distance value is also adjustable via dragging the arrow grips shown on the selected model when in plan or side elevations



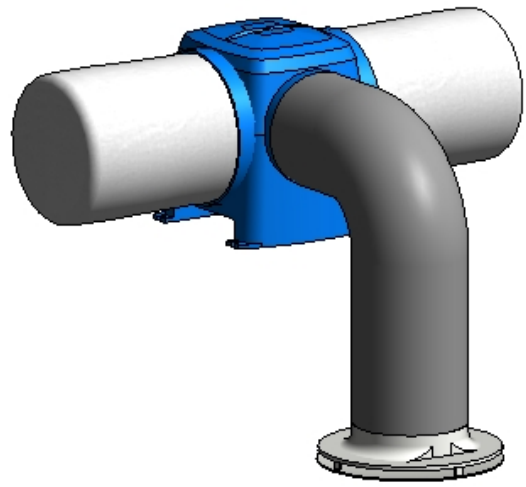
3. **'Body Height Offset'** allows you to manually adjust the height between the underside of the ceiling surface and the base of the fan body (in effect, the thickness of the ceiling if mounting it on the joists).

To avoid collisions in the model a minimum value of 30mm (or 155mm when using the HEAT model) has been written into the model. Any value lower than this will be ignored.

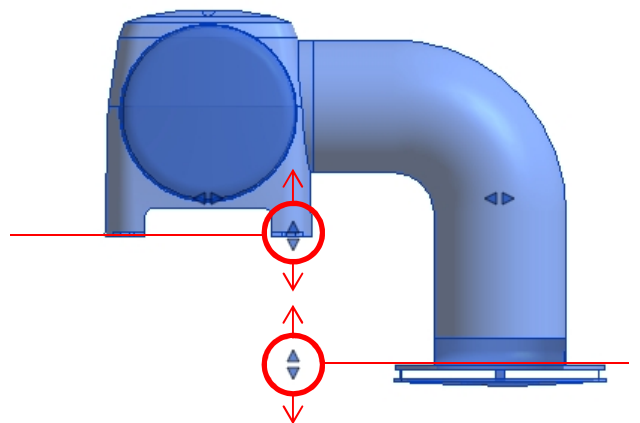
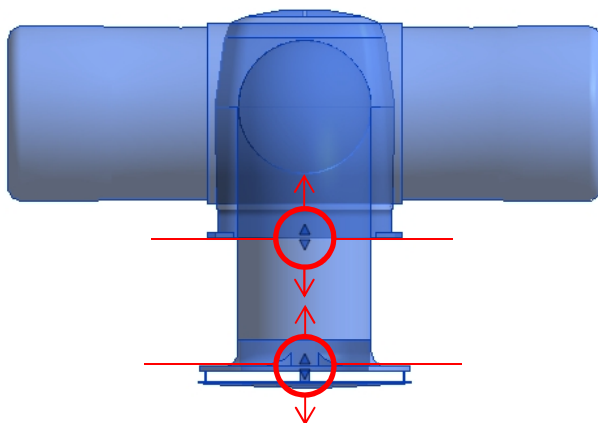
Body Height Offset	80.0
--------------------	------



Body Height Offset	300.0
--------------------	-------



The height value is also adjustable via dragging the arrow grips shown on the selected model when in a side elevation view.



4. If the model is inserted into the project without using the correct procedure then you will be alerted via a red box and **'DO NOT USE'** wording around the model. The model code and description will also show this same message in the schedules. Please then refer to the additional 'Please read Me File' packaged with this family for the correct insertion procedure.

