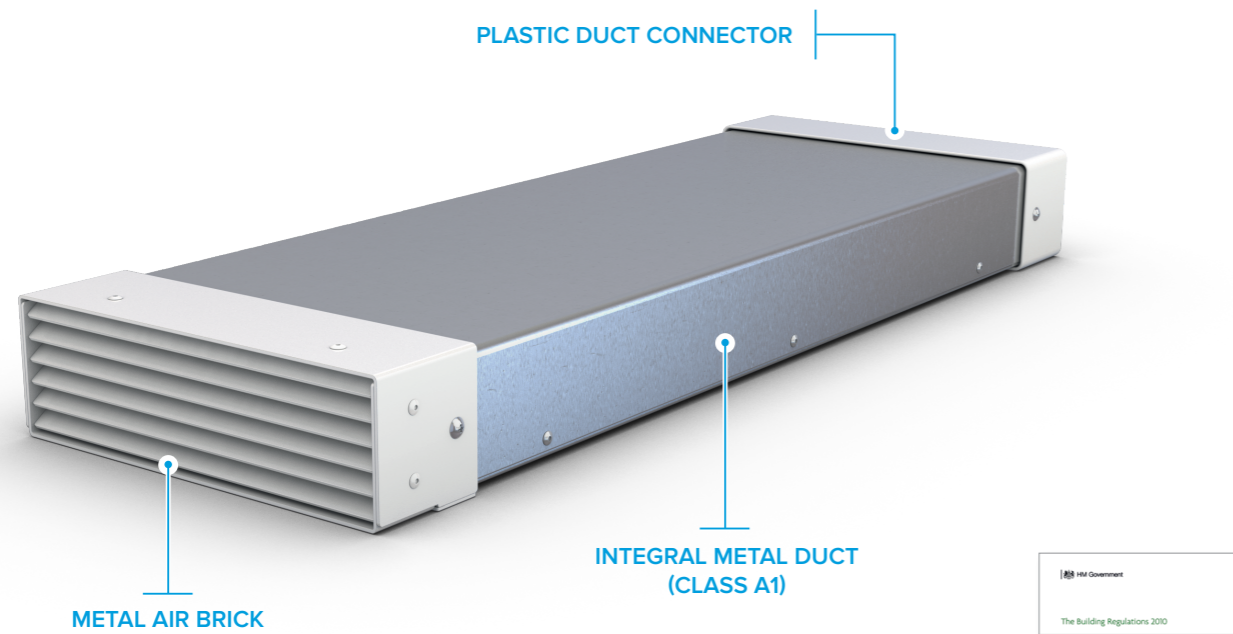
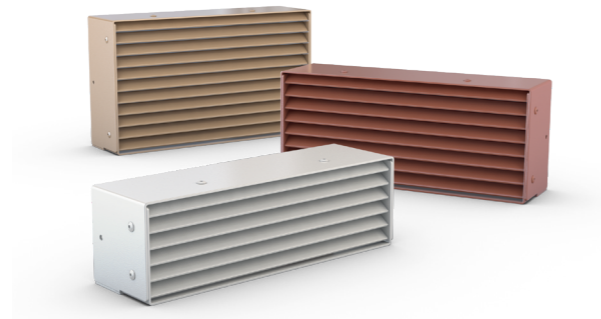


NON-COMBUSTIBLE METAL AIR BRICKS

Nuaire's range of metal air bricks are designed to meet the latest fire safety standards set out in Approved Document B, whilst ensuring a low resistance and unobtrusive installation.



Developed to meet the requirements of Approved document B.



- NON-COMBUSTIBLE**
Meets fire safety standards from Approved Document B.
- LOW RESISTANCE**
Designed and tested to ensure the lowest possible system resistance.
- FULL RANGE**
Available in 220x126, 220x90 and 204x60mm.
- SAFE CONSTRUCTION**
Manufactured from 1.5mm galvanised steel, fire class A1 'no contribution to fire'.
- HIGH CLASSIFICATION**
Powder coating pre-qualified to EN13501-1 classification A2-s1,d0.

METAL AIR BRICK SPECIFICATIONS & RESISTANCE DATA

MAB-220X126-WH

DUCT SIZE	DESCRIPTION	CONNECTION	MATERIAL	COLOUR	FLAMMABILITY RATING	MANUFACTURE STANDARD
220mm x 126mm	Non-combustible, low resistance metal air brick	Female	Galvanised steel	White	A2-s1; d0 (powder coating); A1 (base material)	ISO9001

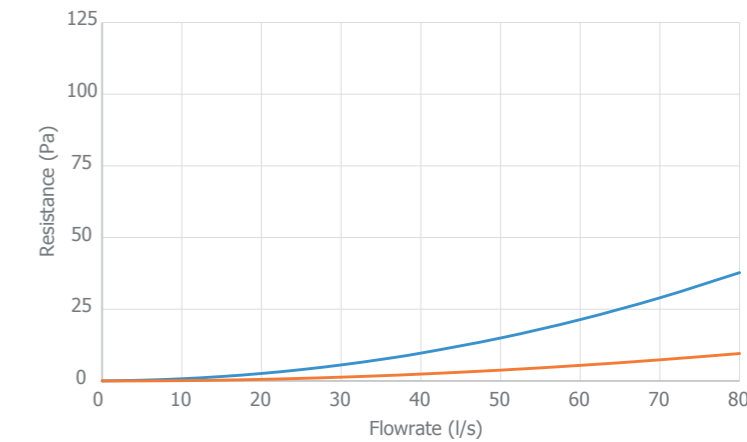


PART NUMBER	DUCT SIZE	AIR DIRECTION	RESISTANCE IN Pa							
			10l/s	20l/s	30l/s	40l/s	50l/s	60l/s	70l/s	80l/s
MAB-220X126-WH	220mm x 126mm	Intake	0.7	2.6	5.5	9.7	15.0	21.4	29.0	37.8
		Exhaust	0.2	0.8	1.6	2.7	4.1	5.7	7.5	9.6

Supply Air
Extract Air

Note: Supply Data based on Test Report No. TB2327.
Exhaust Data based on Test Report No. TB2334.

Note: Performance testing carried out using BS EN 13141-2.



MAB-220X90-WH

DUCT SIZE	DESCRIPTION	CONNECTION	MATERIAL	COLOUR	FLAMMABILITY RATING	MANUFACTURE STANDARD
220mm x 90mm	Non-combustible, low resistance metal air brick	Female	Galvanised steel	White	A2-s1; d0 (powder coating); A1 (base material)	ISO9001

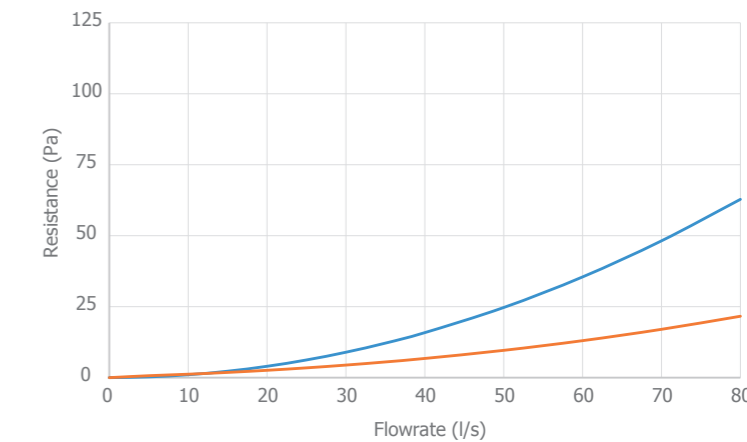


PART NUMBER	DUCT SIZE	AIR DIRECTION	RESISTANCE IN Pa							
			10l/s	20l/s	30l/s	40l/s	50l/s	60l/s	70l/s	80l/s
MAB-220X90-WH	220mm x 90mm	Intake	1.0	4.0	9.0	15.9	24.7	35.5	48.2	62.9
		Exhaust	1.1	2.3	4.1	6.5	9.5	13.0	17.1	21.9

Supply Air
Extract Air

Note: Supply Data based on Test Report No. TB2328.
Exhaust Data based on Test Report No. TB2333.

Note: Performance testing carried out using BS EN 13141-2.



METAL AIR BRICK

SPECIFICATIONS & RESISTANCE DATA

MAB-204X60-WH

DUCT SIZE	DESCRIPTION	CONNECTION	MATERIAL	COLOUR	FLAMMABILITY RATING	MANUFACTURE STANDARD
204mm x 60mm	Non-combustible, low resistance metal air brick	Female	Galvanised steel	White	A2-s1; d0 (powder coating); A1 (base material)	ISO9001

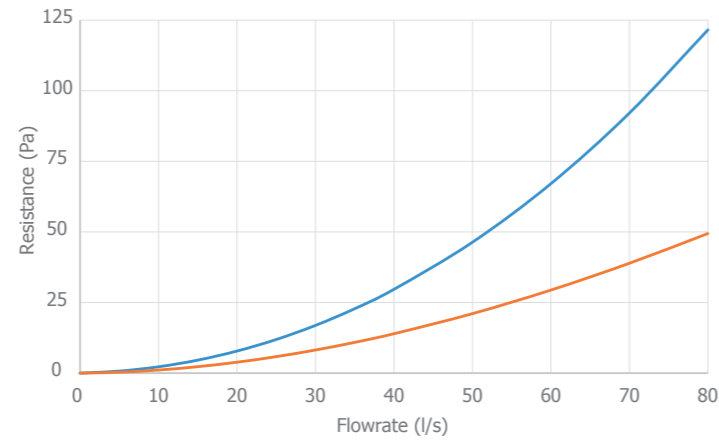


PART NUMBER	DUCT SIZE	AIR DIRECTION	RESISTANCE IN Pa							
			10l/s	20l/s	30l/s	40l/s	50l/s	60l/s	70l/s	80l/s
MAB-204X60-WH	204mm x 60mm	Intake	2.1	7.7	16.9	29.8	46.3	66.4	90.1	117.5
		Exhaust	1.3	4.1	8.3	13.9	20.9	29.2	39.0	50.1

Supply Air
Extract Air

Note: Supply Data based on Test Report No. TB2329.
Exhaust Data based on Test Report No. TB2332.

Note: Performance testing carried out using BS EN 13141-2.



COLOUR OPTIONS

COLOUR	RAL REFERENCE	RAL TITLE	CODE SUFFIX
White	9016	Traffic White	WH
Brown	8011	Nut Brown	BR
Cotswold	1014	Ivory	COT
Terracotta	8004	Copper Brown	TC
Black	9017	Traffic Black	BK
Grey	7046	Telegrey 2	GREY

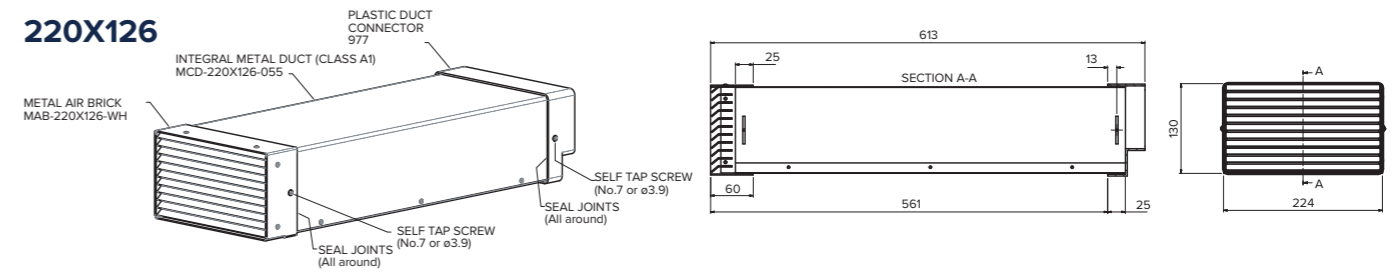
Nuair metal air bricks are available in multiple colours. Replace 'WH' on end of code with applicable suffix to change colour option. Colour options are applicable to metal air bricks only, not sleeves. For a bespoke colour, please contact Nuair on 029 2085 8500 or email residential.enquiries@nuair.co.uk.

INTEGRAL METAL DUCT (CLASS A1)

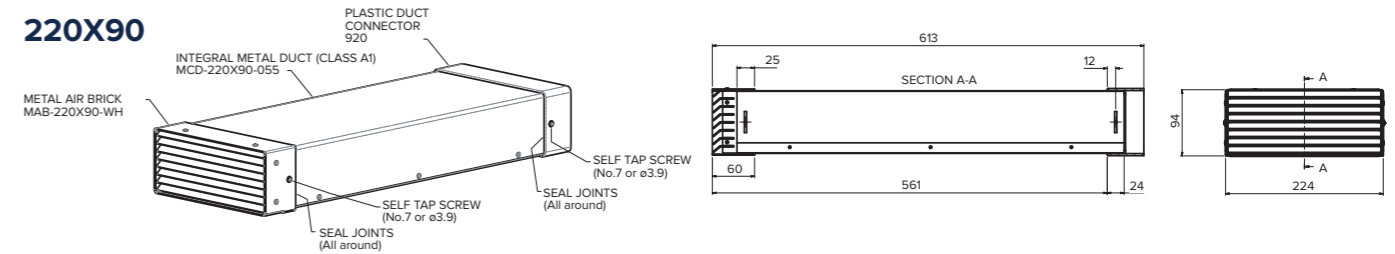
DIMENSIONS

For use with metal air bricks. Integral metal duct (Class A1) have **male** connections.

220X126



220X90



204X60

