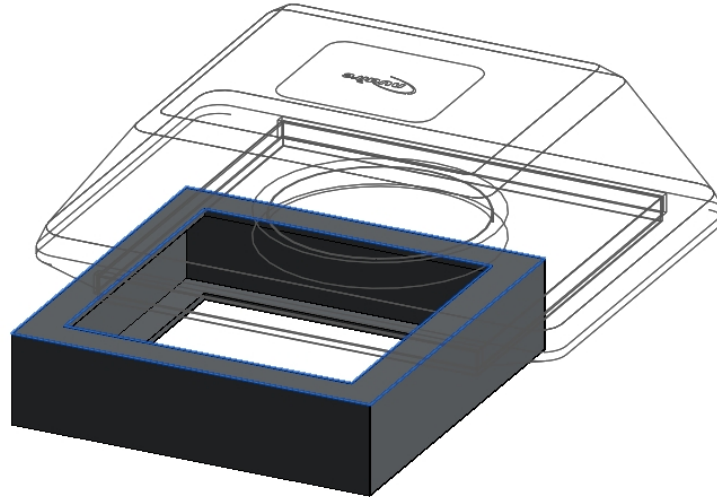




# ***Terminator Fan (TIA/TRAS/TRCS/TRMS) Revit Model Features***

1. These models are face-based models and must be inserted onto an existing exterior face or work plane in the project such as a purlin box curb.



2. The model is parametric and uses a type catalogue so all variants of the terminator fan range can be inserted using the same .rfa file (see Read Me file attached for further info)
3. If the model is inserted into the project without using the correct procedure then you will be alerted via a **red** box and '**DO NOT USE**' wording around the model. The model code will also show this wording in the schedules. Please then refer to the additional 'Please read Me File' packaged with this family for the correct insertion procedure.

