

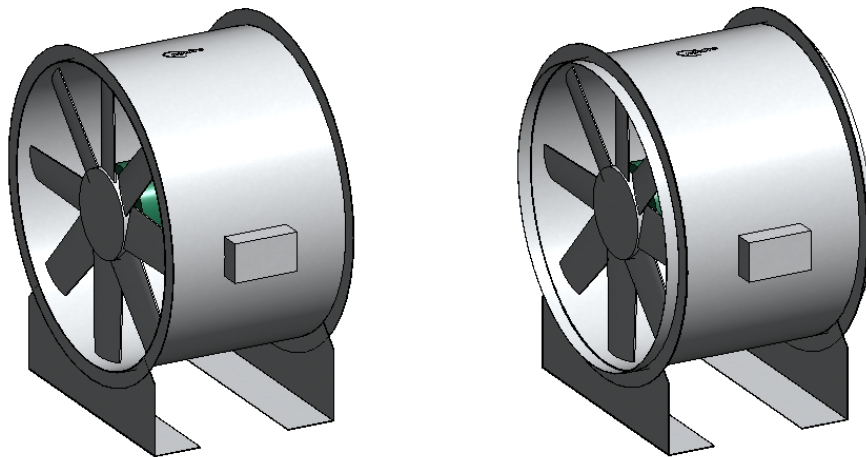
AXUS Axial Model Features

1. The model uses a type catalogue so all generic sizes of the standard AXUS axial single extract fan range can be inserted using the same .rfa file (see Read Me file attached for further info)

The axial.rfa model attached includes the following options in the Model Properties Category in the Properties Window

Model Properties	
Show Matching Flanges	<input type="checkbox"/>
Show Intake Silencer	<input type="checkbox"/>
Show Discharge Silencer	<input type="checkbox"/>
Long Intake Silencer	<input type="checkbox"/>
Long Discharge Silencer	<input type="checkbox"/>

2. 'Show Matching Flanges' shows the matching flanges (Nuaire Code CMF***) on each end of the unit (or silencers if shown). These, in effect, give the unit ducting spigots.

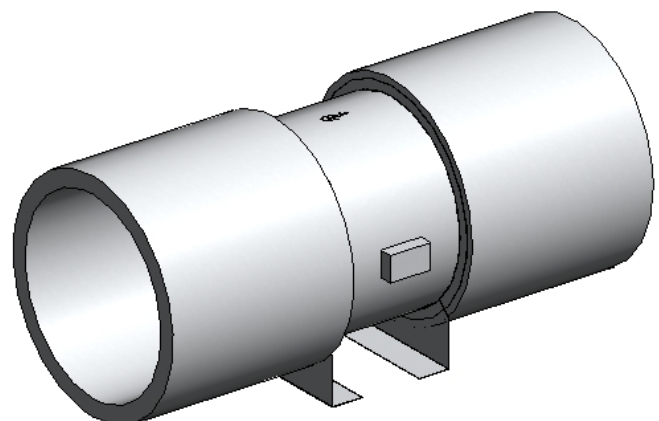
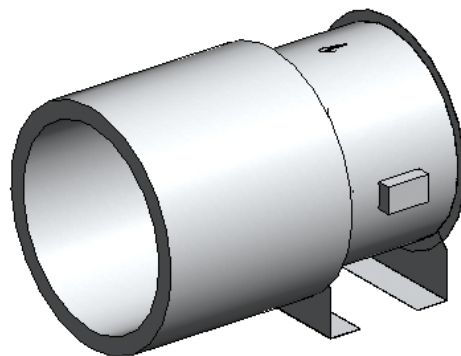
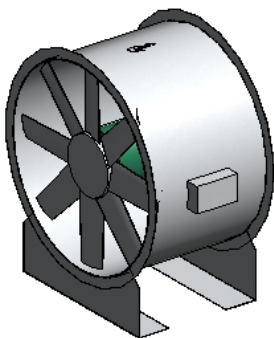


3. 'Show Intake/Discharge Silencer' shows the appropriate silencer in place on the unit. **These are based on our standard non-podded CA silencer range i.e. CA63S.** These silencers are also scheduled as individual items.

Show Intake Silencer	<input type="checkbox"/>
Show Discharge Silencer	<input type="checkbox"/>

Show Intake Silencer	<input checked="" type="checkbox"/>
Show Discharge Silencer	<input type="checkbox"/>

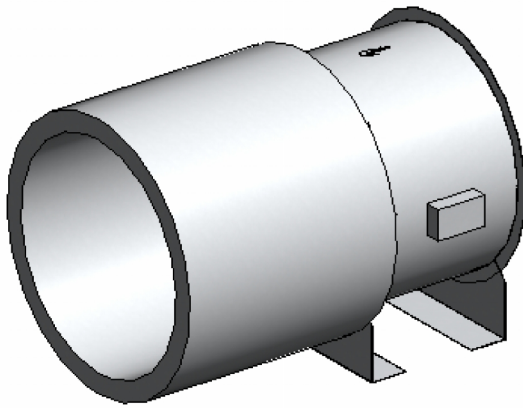
Show Intake Silencer	<input checked="" type="checkbox"/>
Show Discharge Silencer	<input checked="" type="checkbox"/>



Continued on next page...

4. 'Long Intake/Discharge Silencer' changes the silencers shown and scheduled from short to long i.e. CA63L instead of CA63S.

Show Intake Silencer	<input checked="" type="checkbox"/>
Show Discharge Silencer	<input type="checkbox"/>
Long Intake Silencer	<input type="checkbox"/>
Long Discharge Silencer	<input type="checkbox"/>



Show Intake Silencer	<input checked="" type="checkbox"/>
Show Discharge Silencer	<input type="checkbox"/>
Long Intake Silencer	<input checked="" type="checkbox"/>
Long Discharge Silencer	<input type="checkbox"/>

