

MEVDC MULTI POINT EXTRACT

A QUIET, ENERGY EFFICIENT, LOW DEPTH CENTRAL EXTRACT SYSTEM.
SAP Q RECOGNISED.



BENEFITS

MEETS BUILDING REGULATIONS

SAP Appendix Q recognised. Part F&L - England & Wales. Scottish technical handbook (BRE398 referenced). Technical booklet K1998.

LOW DEPTH, HIGH PERFORMANCE

Only 190mm deep & up to 98l/s.

MOST EFFICIENT

Latest DC motors provide high performance with low SFP within their respective class.

QUIETEST SOLUTION

Advanced motor and impeller technology with acoustic lined lid (fully lined case option available) provide one of the quietest options.

QUICK INSTALLATION

Unique locating bracket enables the units to be fixed in any plane, quickly and efficiently at either 1st fix or 2nd fix stage.

REMOTE FAILURE INDICATOR

Visual and audible failure indicator.
Code: ES-AVI / ES-OPUS-RFI.

EASY COMMISSIONING

Ecosmart 'dial a duty' option allows for infinitely variable speed selection allowing for exact design selection.

EASY MAINTENANCE

Easy to access for optional filters for quick and easy maintenance.

FLEXIBLE SOLUTION

Unit can be fixed horizontally or vertically.

ADDED STRENGTH

ABS moulded case & lid provides longer life and a more robust unit.

ADDITIONAL OPTIONS

Run on timer, humidistat, G2 filter together with a range of round and rectangular spigot and damper kits.

WARRANTY

5 year warranty for peace of mind.

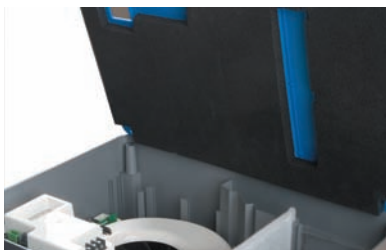
Basic, cost effective model also available.
Code - MEVDC2. Contact Nuaire's technical team 02920 858200 for further information.



Dial a duty. (Optional).



Simple fixing bracket.



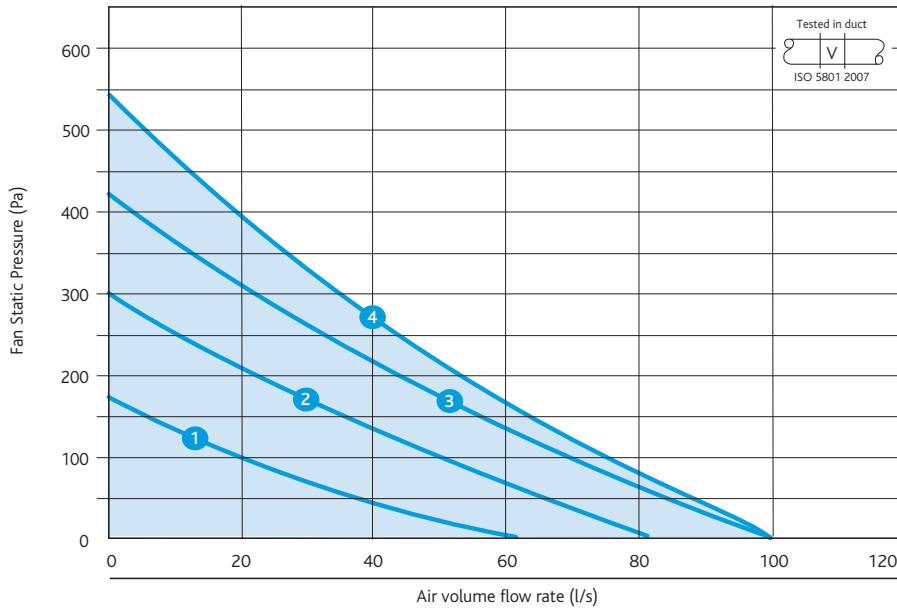
Acoustically lined lid. (optional case lining available).



Easy access to filter. (Optional).

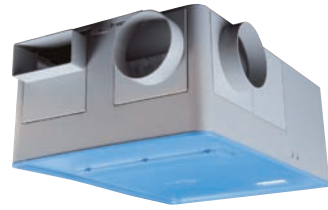
PERFORMANCE - MEVDC

MEVDC Multi Point Extract



Note: Above are variable speeds, not set speeds.

Casing



Code description (example)

MEVDC - ES G2 L H D4



1. DC motor type
2. Ecosmart 'Dial a duty' (optional)
3. G2 filter (optional)
4. Lined case (optional)
5. Humidistat (optional)
6. D4 damper kit (optional)

MEVDC

ELECTRICAL & SOUND

Curve	Power Consumption Watts	FLC Amps	Open inlet sound power levels dB re 1pW								Breakout Noise level dBA@3m
			63	125	250	500	1K	2K	4K	8K	
1	11	0.14	39	39	44	36	31	22	21	18	19
2	21	0.19	40	42	46	41	37	28	24	18	27
3	35	0.25	43	43	50	46	41	31	28	27	31
4	52	0.37	45	44	54	52	44	35	31	27	34

Note: above sound level figures are for fully lined unit. Unit has a soft start feature as standard therefore the starting current is the same as the full load current. Step curves are for information purposes only and are not individual units. The electrical and sound information in the table is nominal. Note: dBA figures are calculated based on hemi-spherical propagation.

SAP APPENDIX Q TEST RESULTS

Application	Specific fan power (W/l/s)		Energy Saving Trust Best Practice Compliant
	MEV-DC	MEVDC-ES	
Kitchen + 1 wetroom	0.35	0.34	Yes
Kitchen + 2 wetrooms	0.30	0.31	Yes
Kitchen + 3 wetrooms	0.31	0.33	Yes
Kitchen + 4 wetrooms	0.33	N/A	Yes
Kitchen + 5 wetrooms	0.38	N/A	Yes

OPTIONAL EXTRAS

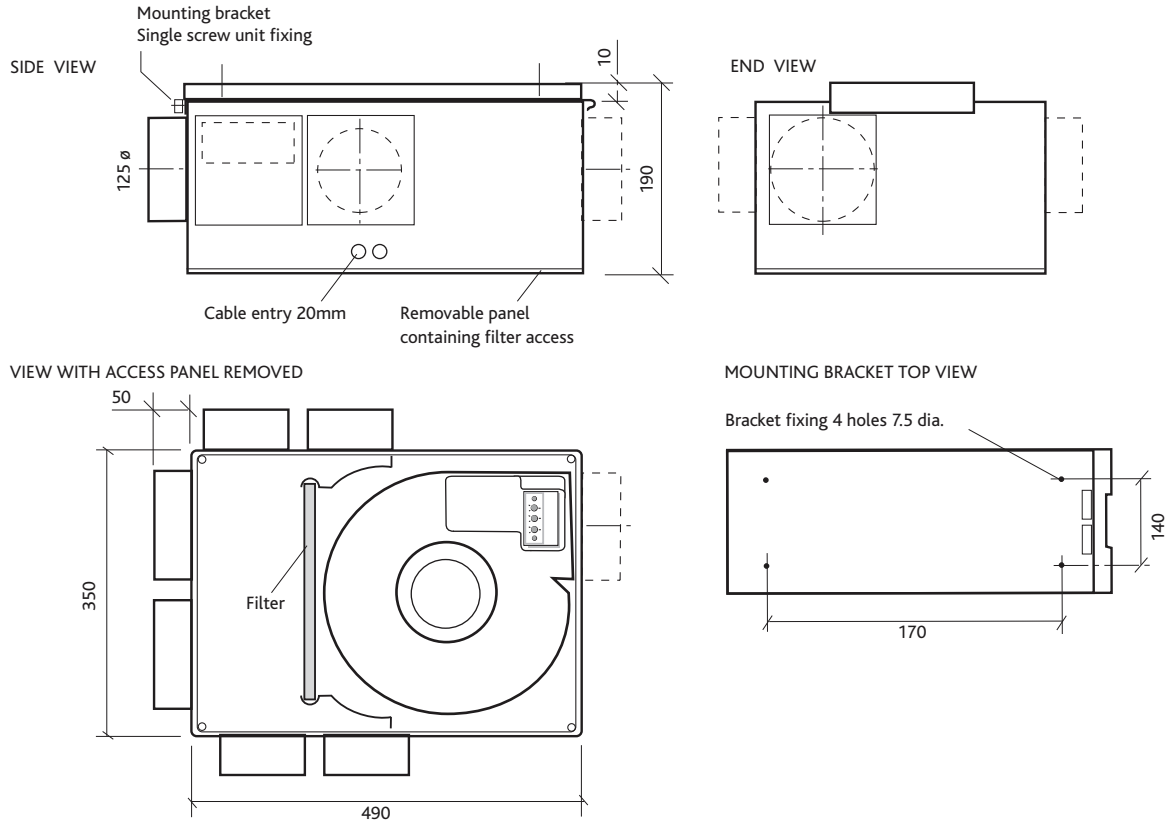
Optional extras:	Code	MEVDC
Ecosmart Dial 'a' duty	ES	●
Run on timer	R	●
G2 filter	G2	●
*G4 filter (for MEV-SVS application)	G4	●
Acoustic lining (full case)	L	●
Humidistat	H	●
*Please refer to page 2.10		

Spigot/damper kits (Choose from S1-D4)

Kit 1 - 4 x 100 circular & 2 x 125 circular spigots	S1	●
Kit 2 - 6 x rectangular spigots 110 x 54mm	S2	●
Kit 3 - 6 x rectangular dampers 110 x 54mm	D3	●
Kit 4 - 4 x 100 & 2 x 125 circular damper	D4	●

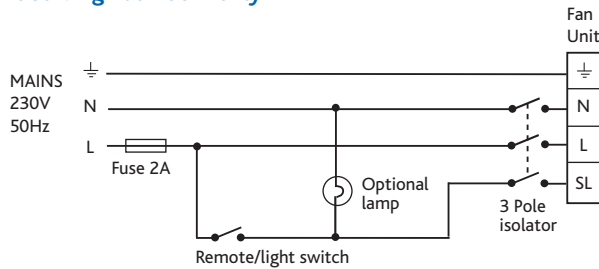
Note – unless spigot kit is specified, a default kit comprising of 4 x 100 and 2 x 125mm spigots will be included.

DIMENSIONS (MM) - MEVDC

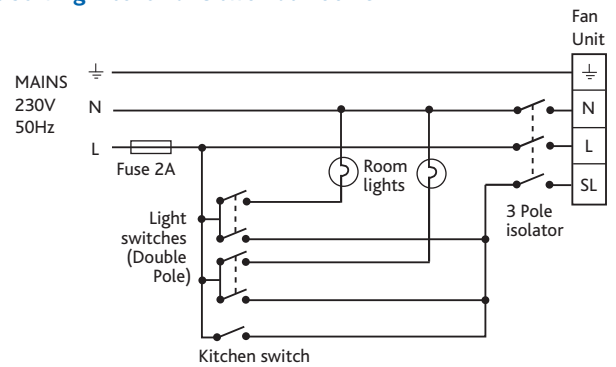


WIRING - MEVDC

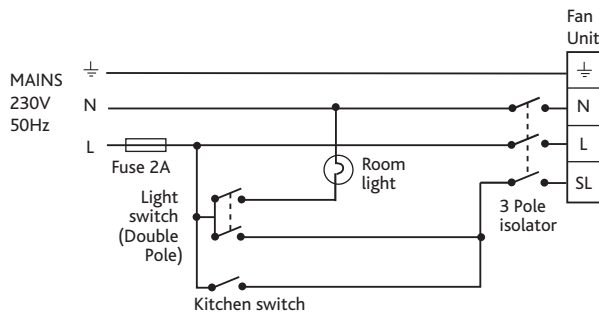
Unit serving Bathroom only



Unit Serving Kitchen and two Bathrooms



Unit Serving Kitchen and Bathroom



CONSULTANTS SPECIFICATION

MEVDC UNIT

The unit shall be designed specifically for incorporation within a system designed to comply with the requirements of Part F Building Regs. Ducting and grilles forming part of the system are specified elsewhere.

The unit shall be manufactured by a BSI Registered Firm with ISO 9000 certification. The unit's casing shall be of ABS, Moulded plastic with a part lined lid of high density class "O" flame retardant acoustic insulation designed to limit noise breakout from the unit to a maximum of 34dBA (DC model) - hemispherical radiation.

The unit shall incorporate a low profile single point mounting bracket for horizontal or vertical mounting of the unit. When installed the unit shall not project any more than 190mm from the surface onto which it installed.

Air discharge from the unit shall be via a tapered spigot for easy connection to ducting. The unit shall be capable of multiple air inlets formatting. The unit casing shall have the facility to allow the connection, via tapered air inlet spigots supplied with the unit of up to 4 No. 100 mm diameter and 2 No. 125mm diameter air inlet ducts.

The unit shall incorporate a quick release, access panel for easy maintenance if filter is fitted. Replacement filter codes are G2 = 776717 and G4 = 776718.

The unit shall be constructed with one removable panel allowing full maintenance access. The unit shall incorporate a fully speed adjustable (note: stepped speed control shall not be acceptable) low energy, high efficiency DC fan/motor assembly with sealed for life bearings designed to operate continuously at a pre-set "background" design airflow rate with the ability to increase to a pre-set "boost" design airflow rate as and when required. It shall operate up to an ambient temperature of 40°C and be fitted with a one shot thermal overload protective device.

The impeller should be a centrifugal backward curved type, dynamically balanced mounted directly onto the motor.

The unit shall incorporate electrical connections to allow for the unit's "boost" airflow to be triggered by any one or combination of the following:

1. A switched live signal, 230V.
2. A remote speed control.

When the unit "boost" has been triggered by the switched live signal the unit shall incorporate an adjustable "run on" facility (optional).

The MEVDC unit shall be offered with a 5 year warranty.

MEVDC-ES (optional Ecosmart control).

The unit shall be provided with a casing mounted, easily accessible, factory connected, user control panel providing the following airflow control settings:

- (a) Setting of the unit's "background" design airflow rate via a calibrated dial labelled between 10 and 90 litres/second.
- (b) Setting of the units "boost" design airflow rate via a calibrated dial labelled between 10 and 90 litres/second.
- (c) Setting of the "boost" airflow run on time via a calibrated dial labelled between 0 and 60 minutes.

The unit shall incorporate a factory fitted, automatic constant volume control facility to ensure as far as is practical that the pre-set "background" and "boost" design airflows are maintained, within the capabilities of the unit's performance levels.

The control panel shall also incorporate a fan status indicator light and the facility to check and provide visual indication that the installed unit is actually achieving the duties set at the dial.