

Ceiling fan kits supply / Extract units

NUAIRE

NuAire Limited
Western Industrial Estate
Caerphilly,
Mid Glamorgan CF83 1XH
Telephone: 029 20 885911
Facsimile: 029 20 887033
Email: info@nuaire.co.uk

Leaflet 671052

MAY 2009

General Description

The NuAire XS Ceiling Fan Kit is available in 6", 9" and 12" impeller sizes suitable for supply or extract and can be the heart of a room's automatic ventilation system.

The removable interior grille provides easy access while the external rotor motor makes for simple removal of the push-on impeller for cleaning. Upward angled interior grille vanes shield workings from view.

The fan is IP24 splash proof approved with the motor rated at IP44.

All external components are made in soft grey colours from ultra violet stable, flame retardant ABS material so they will blend with most decors and will not fade in sunlight.

Switching

Operated via a separately wired 3 amp fused spur (by others) or operated via the optional XS-MFC remote controller allowing supply or extract, variable speed and automatic or manual switching of several fans if desired (see page 6).

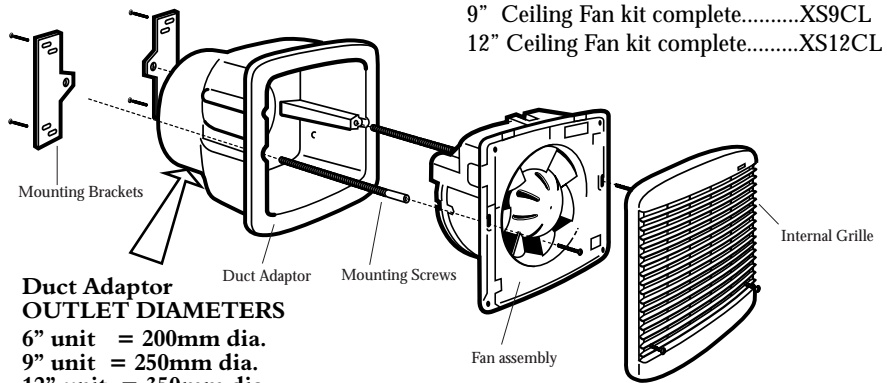
Sensors

Sensors are available as remote units or integral 'plug in' units. They are able to control multiple fans, depending on sensor and fan types. Integral sensors are quick and easy to install and are aesthetically pleasing, whilst remote sensors give the benefit of location close to the pollutant source.

Remote sensors can be fitted with an optional security strap to prevent unwanted tampering.

Ceiling Fan Kits are supplied as a complete package with all wall installation parts included.

Fig 1 Exploded view of assembly.



**Duct Adaptor
OUTLET DIAMETERS**
6" unit = 200mm dia.
9" unit = 250mm dia.
12" unit = 350mm dia.

Contents

Page

General Description / Dimensions	1
Installation	2
Wiring details	3
Integral sensors	4
Remote sensors / Remote switch	5
Ancillaries	8
Warranty	8

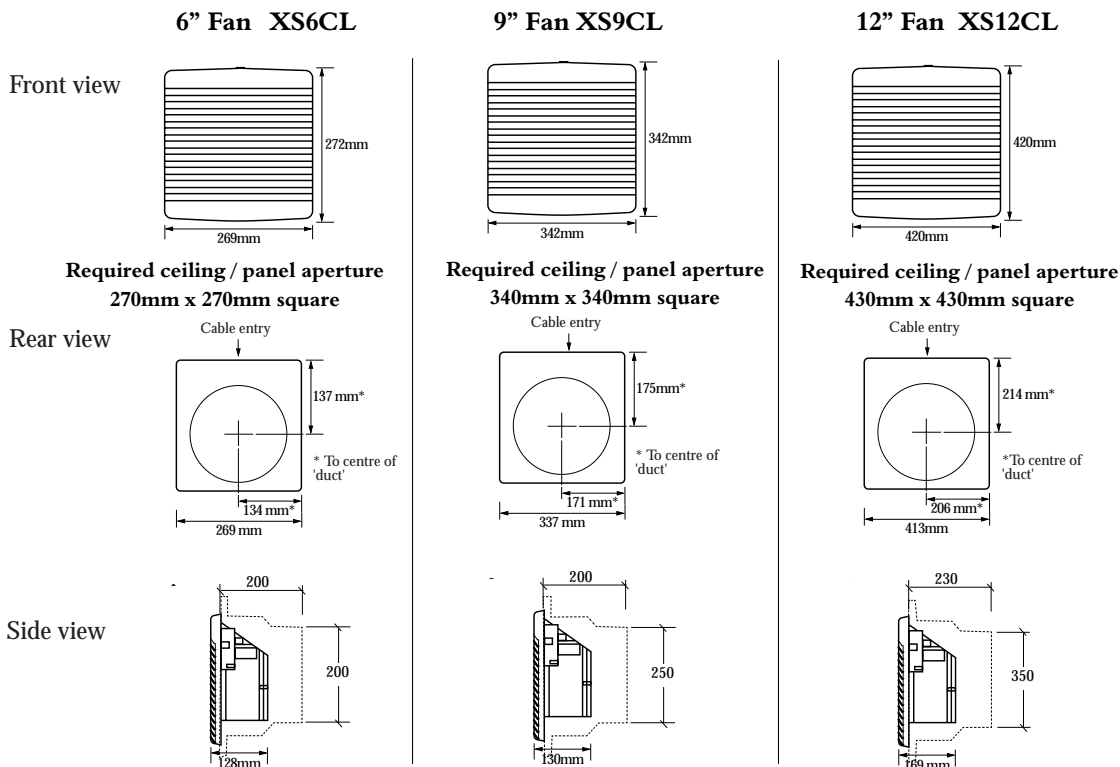
Coding for WindowFan Kits

DESCRIPTION

CODE

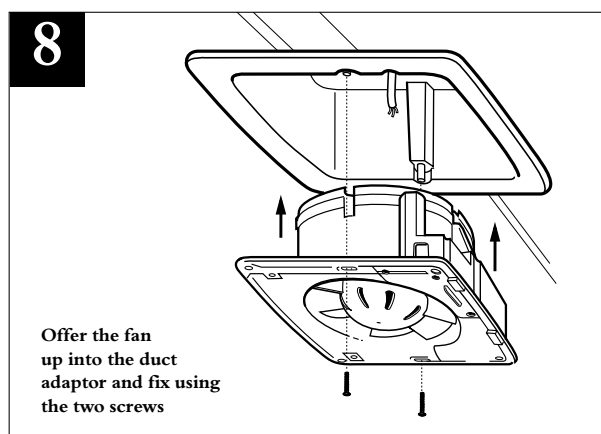
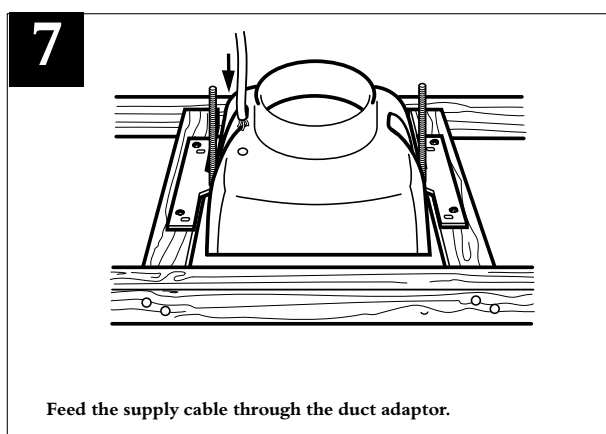
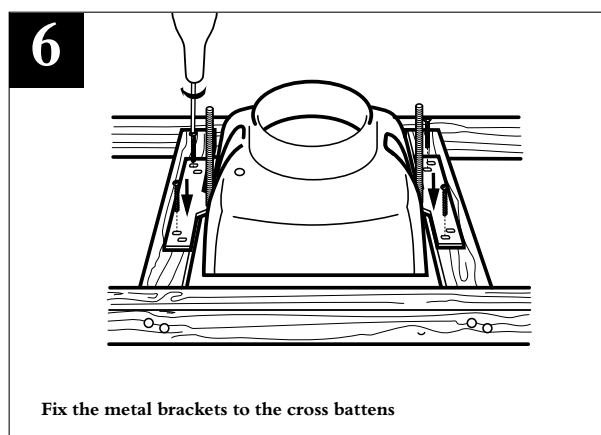
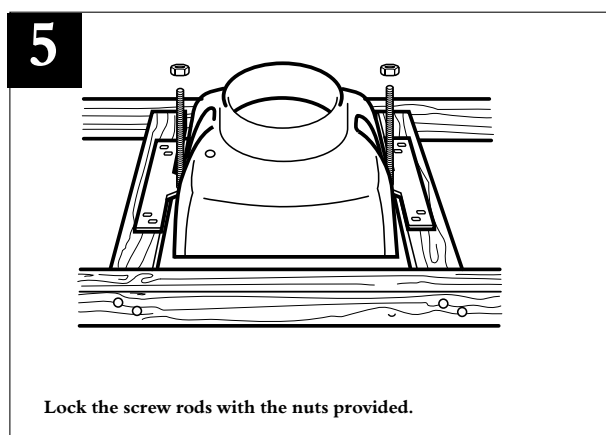
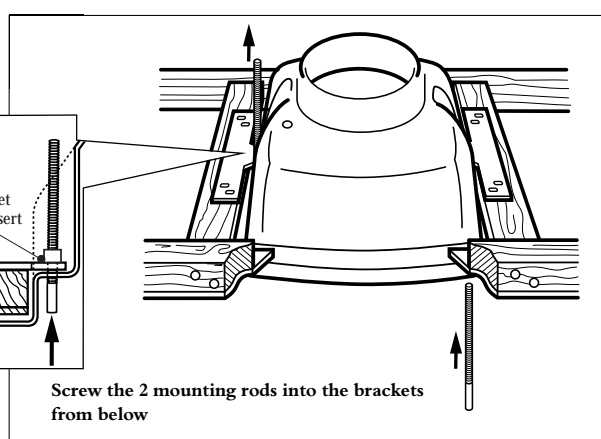
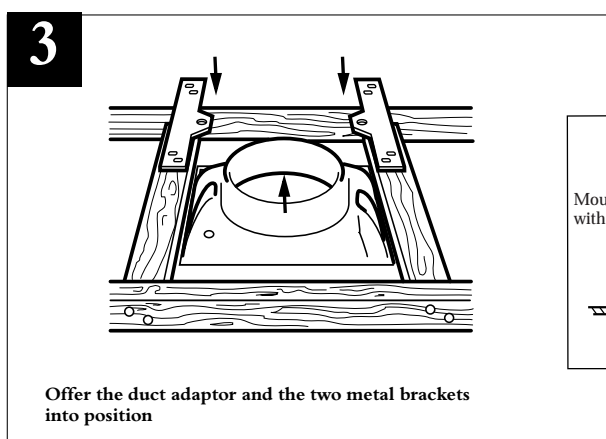
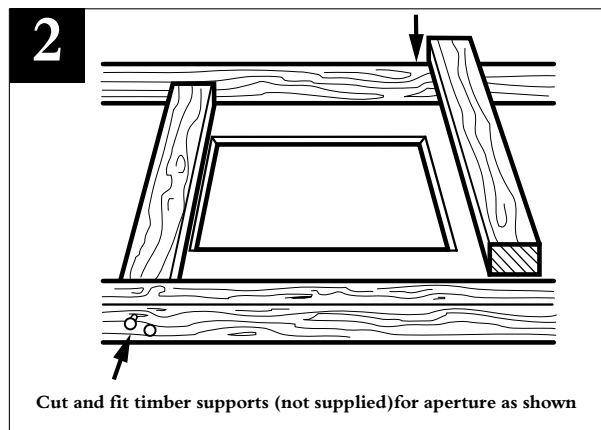
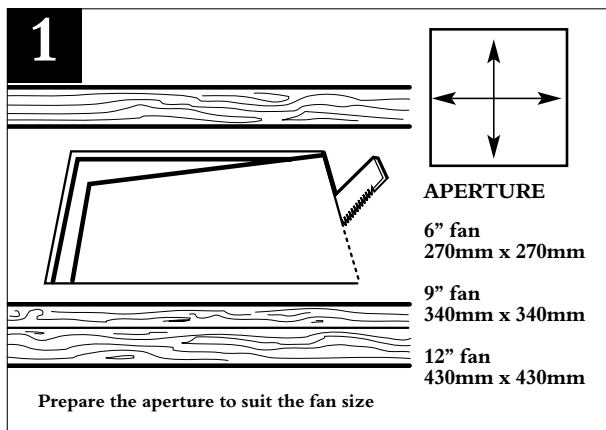
6" Ceiling Fan kit complete.....	XS6CL
9" Ceiling Fan kit complete.....	XS9CL
12" Ceiling Fan kit complete.....	XS12CL

Dimensions Fig 2



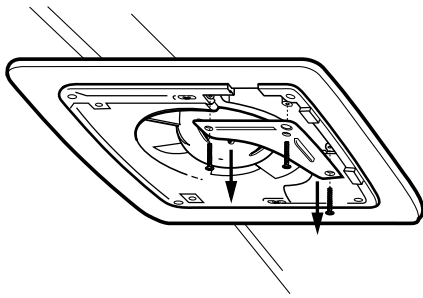
Installation & Maintenance XS CEILING FAN KITS

Installation of Ceiling Fans



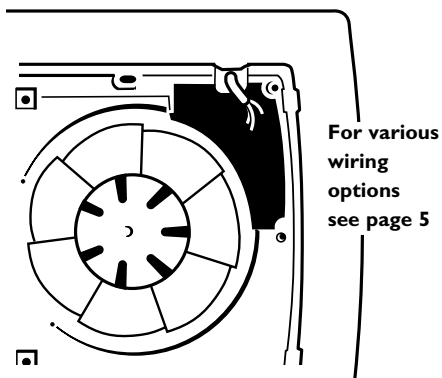
Installation of Ceiling Fans

9



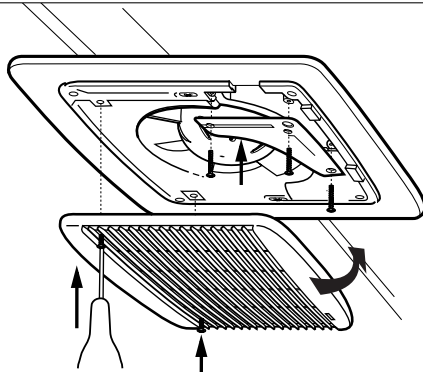
Remove the electrical connection panel (top left).

10



Bring the cable through the fan blade approx 150mm

11



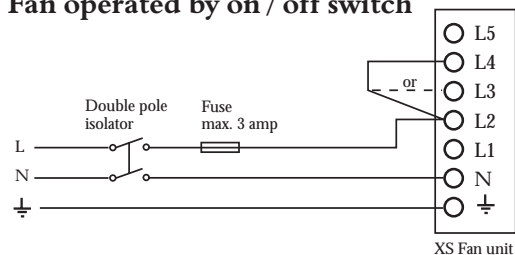
Fix the electrical connection before offering up the internal grille. Note grille clips over top edge before being fixed.

Installation & Maintenance **XS** CEILING FAN KITS

NOTES:

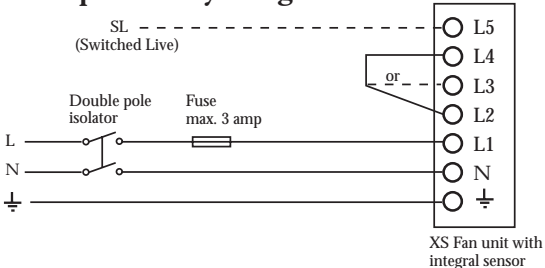
- 1) Ensure adequate air replacement for the fan and any fuel burning appliance in the room.
- 2) All electrical products should be wired and installed by a qualified electrician in accordance with the wiring regulations.
- 3) Always isolate the unit from the mains supply before carrying out any cleaning of the unit.
- 4) Do not use any solvents to clean this product.

Fan operated by on / off switch



Connect link wire between L2 & L4 for extract
or
Connect link wire between L2 & L3 for supply

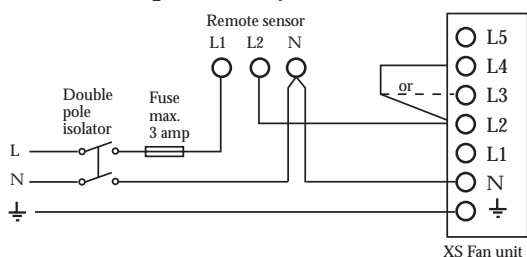
Fan operated by integral sensor



Connect link wire between L2 & L4 for extract
or
Connect link wire between L2 & L3 for supply

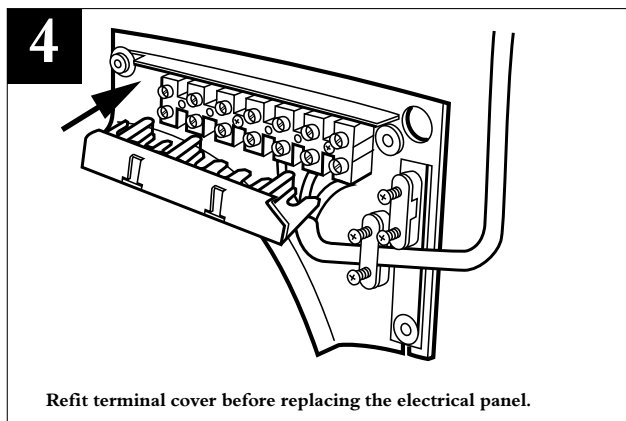
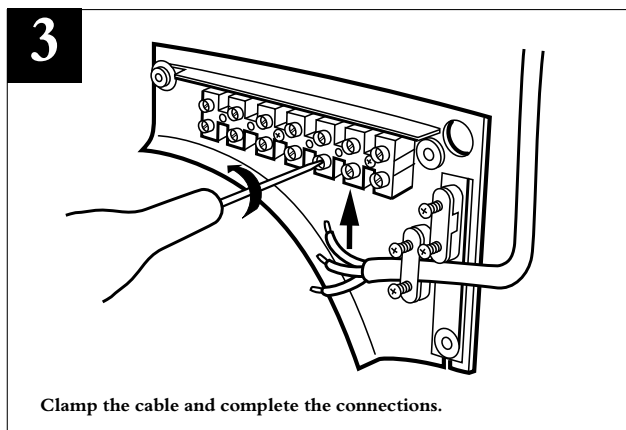
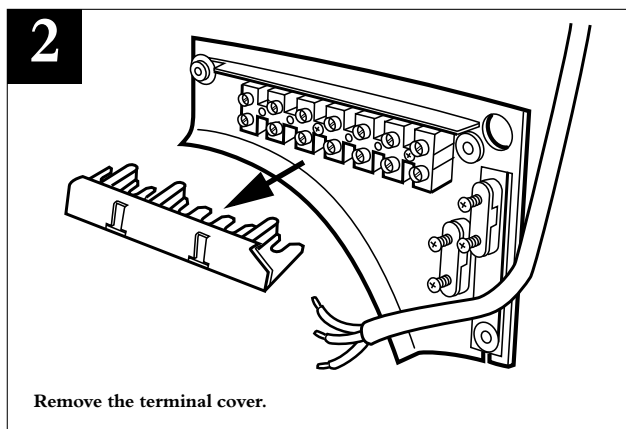
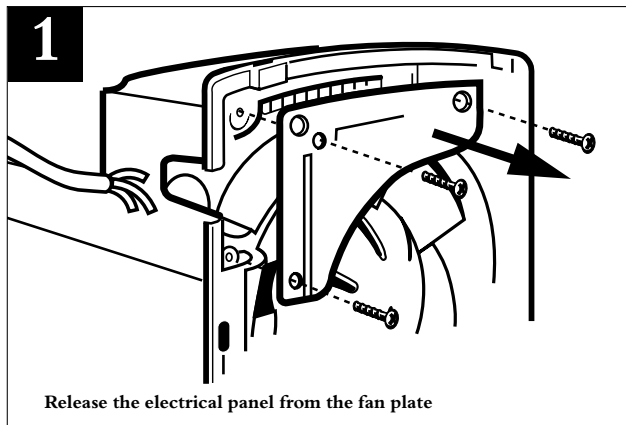
Connect switched live signal to L5 for integral timer module "TA"

Basic fan operated by remote sensor



Connect link wire between L2 & L4 for extract
or
Connect link wire between L2 & L3 for supply

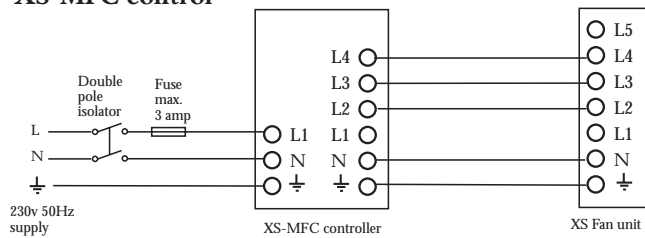
Electrical Wiring Instructions



Installation & Maintenance **XS** CEILING FAN KITS

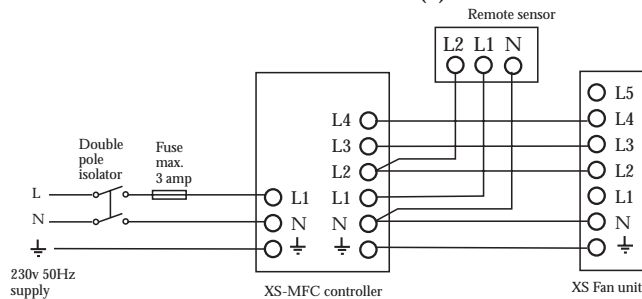
Electrical Wiring Instructions .. continued

Supply / Extract fan operated via remote XS-MFC control



Remote switch may be set: On / Off, Forward / Reverse, Economy / Std. (variable speed), Auto / Manual.

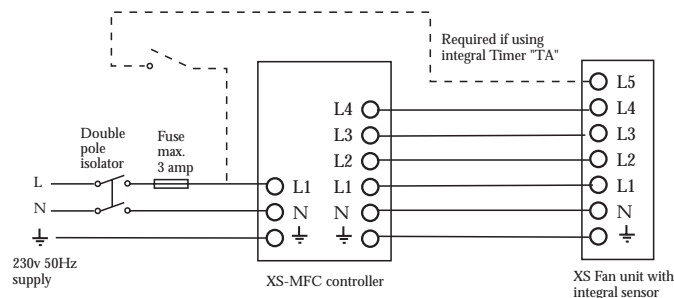
Supply / Extract fan operated via remote XS-MFC control & Remote Sensor(s)



Remote switch may be set: On / Off, Forward / Reverse, Economy / Std. (variable speed), Auto / Manual.

One or more Remote Sensors may be wired in parallel to one XS-MFC Control.
Humidity Sensor: XS-HR, Air Quality Sensor: XS-AQR
Passive Infra Red Sensor: XS-PIRR,

Supply / Extract fan operated via remote XS-MFC control and Integral Sensor



Remote switch may be set: On / Off, Forward / Reverse, Economy / Std. (variable speed), Auto / Manual.

Maximum one Integral Sensor per fan 6/9/12 denotes unit size identity
Humidity Sensor: XS-H6/9/12, Air Quality Sensor: XS-AQ6/9/12
Passive Infra Red Sensor: XS-PIR6/9/12, Temperature Sensor: XS-TH6/9/12
Run on Timer: XS-TA6/9/12

A single sensor will switch all fans if more than one fan is being operated by a single XS-MFC controller.

NOTE:

Multi-fan options:
Up to 5 fans (size 6" / 9") can be controlled by one XS-MFC.
Up to 3 fans (size 12") can be controlled by one XS-MFC.
Do not mix different fan sizes on the same controller.

6" Fan XS6CL Consumption and weight

Model	Input Power Watts		Weight kg
	Max.	Economy	
XS6CL supply + extract	38	20	3.95

Note figures are for extract only

Electrical Specification

230V ~ 50Hz Class I. Motor thermally protected by overload device. Cable: 1mm max. or min. Fuse: 3 amp (if fan is supplied from a 5A lighting circuit, no local fuse is required).

9" Fan XS9CL Consumption and weight

Model	Input Power Watts		Weight kg
	Max.	Economy	
XS9CL supply + extract	50	37	5.5

Note figures are for extract only

Electrical Specification

230V ~ 50Hz Class I. Motor thermally protected by overload device. Cable: 1mm max. or min. Fuse: 3 amp (if fan is supplied from a 5A lighting circuit, no local fuse is required).

12" Fan XS12CL Consumption and weight

Model	Input Power Watts		Weight kg
	Max.	Economy	
XS12CL supply + extract	100	70	8.7

Note figures are for extract only

Electrical Specification

230V ~ 50Hz Class I. Motor thermally protected by overload device. Cable: 1mm max. or min. Fuse: 3 amp (if fan is supplied from a 5A lighting circuit, no local fuse is required).

IMPORTANT NOTE
(Shutter Operation XS fans)
There will be a short delay on startup and shutdown of approximately 40 seconds.
This is normal.

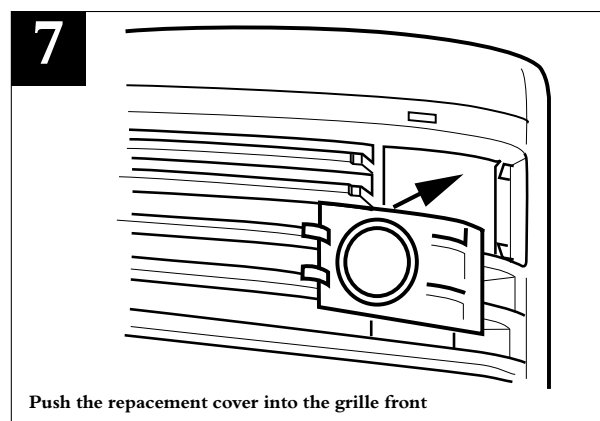
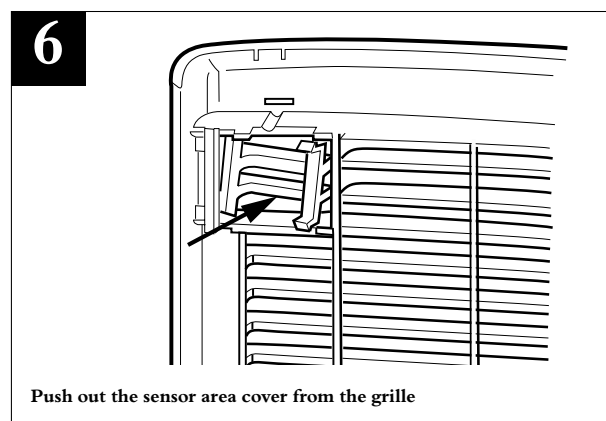
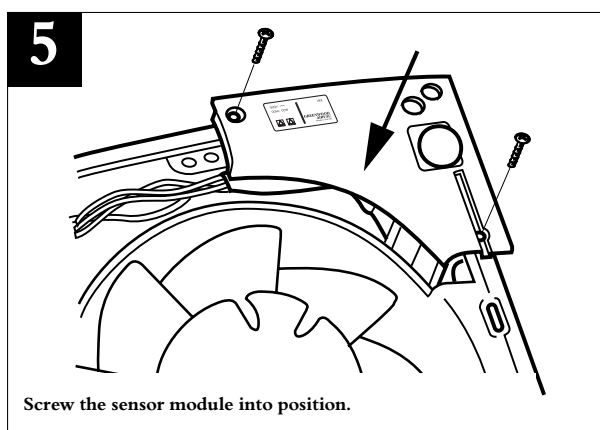
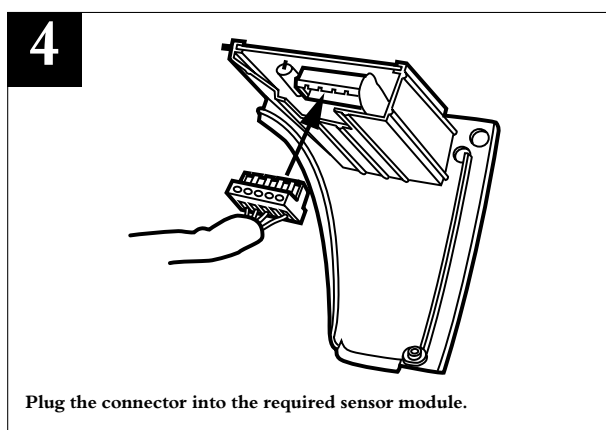
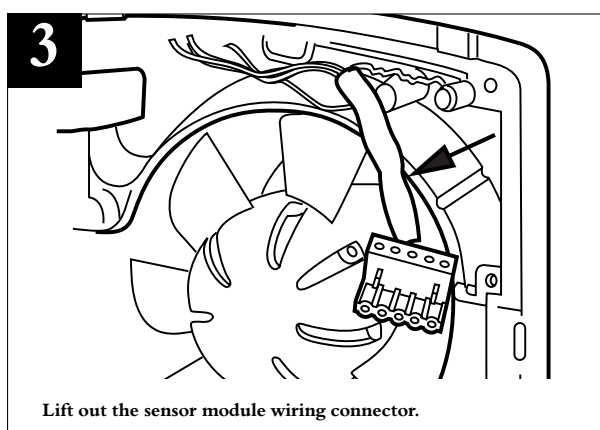
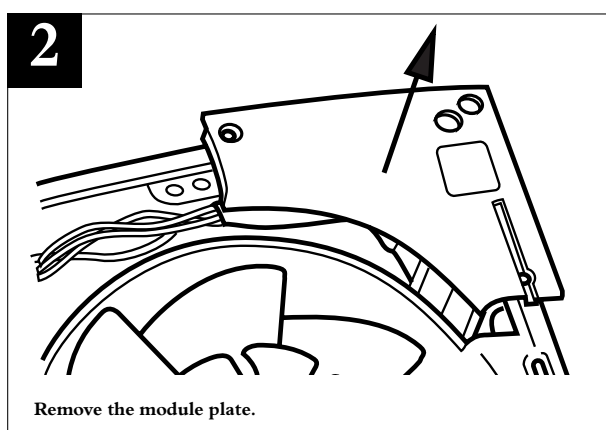
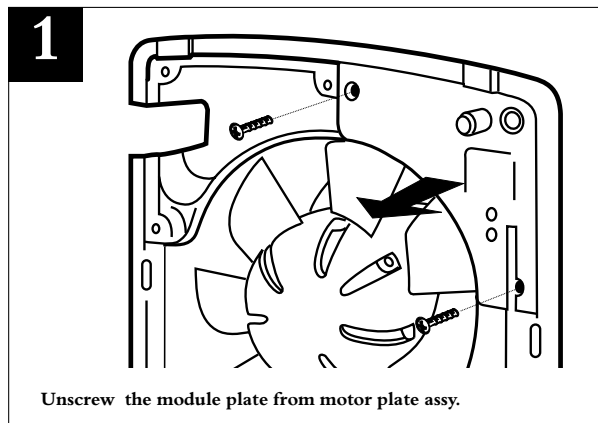
Installation & Maintenance *XS* CEILING FAN KITS

Installation of CEILING Fans

Fitting Integral Sensors (optional)

Note:
Before following the pictorial sequence shown- first remove the fans front cover grille (2 screws). Release the four main corner screws and lift out the motor/fan plate assembly. Remove the electrical coverplate opposite the sensor plate refer to page 5 if needed.

Follow the pictorial sequence on this page.



Installation & Maintenance **XS** CEILING FAN KITS

Fitting Remote Controller XS-MFC or Remote Sensors (optional)

The XS-MFC Multi Fan Control provides supply or extract, variable speed and automatic or manual switching of several fans if desired, (see note below).

The control is best mounted approx 1.5m above the floor. Remote Sensors are available for Humidity, Air Quality and Passive Infra Red control.

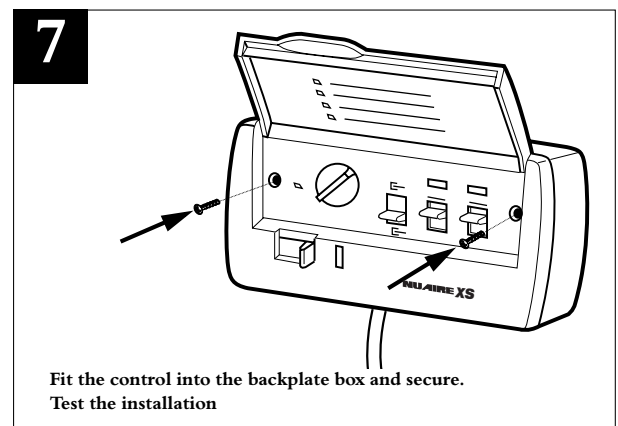
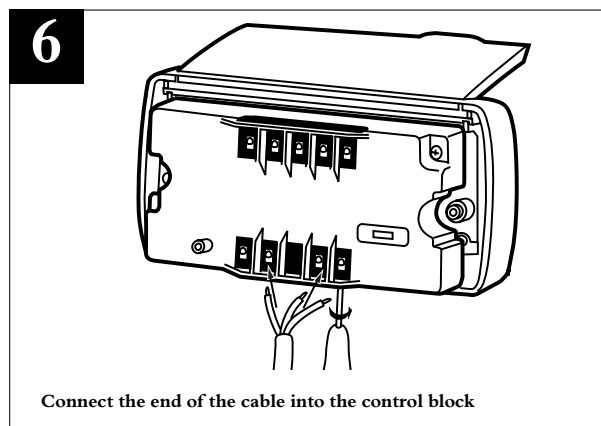
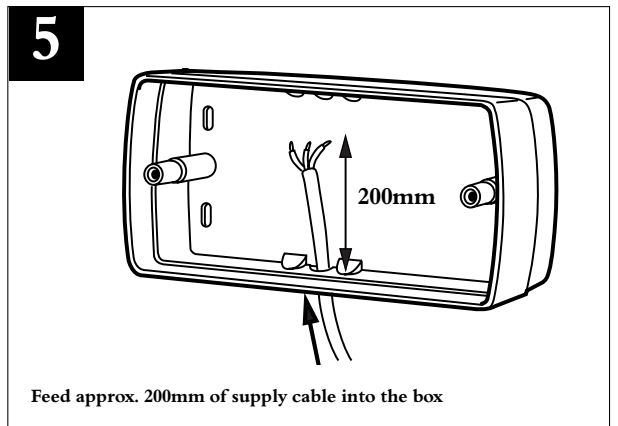
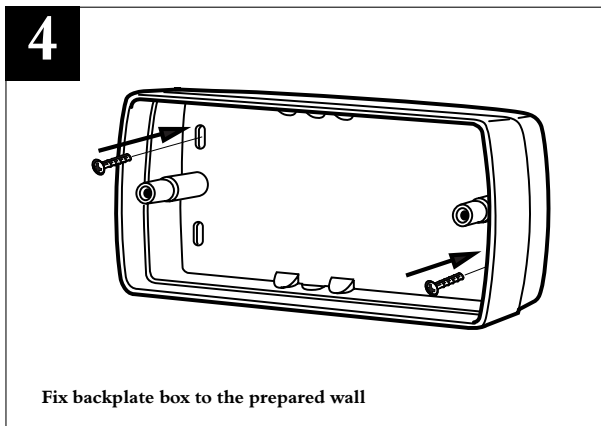
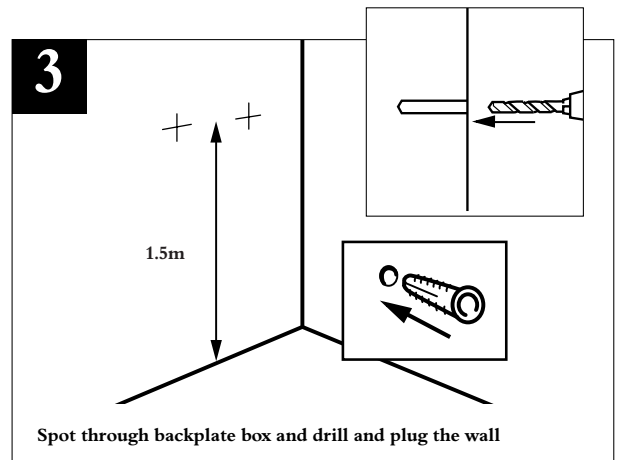
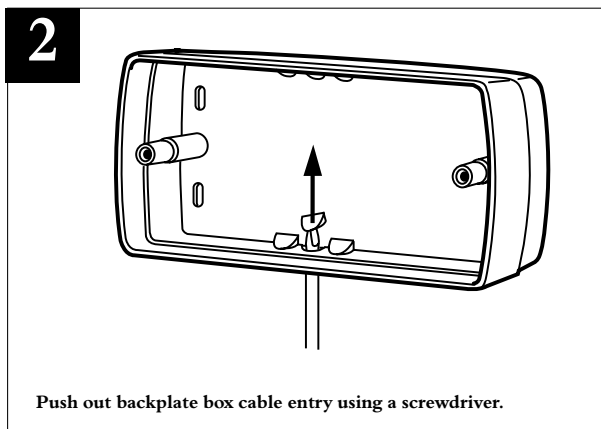
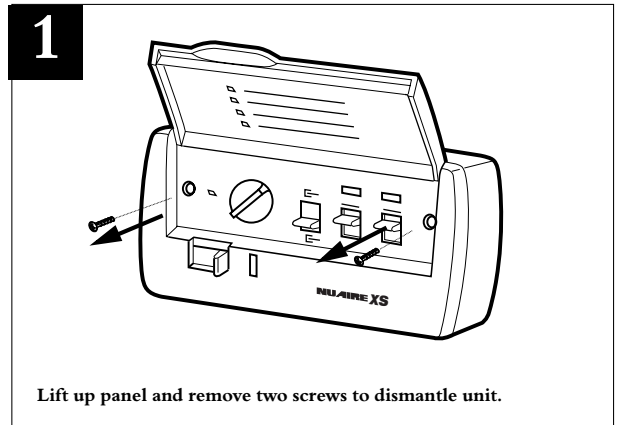
Remote Sensors should be positioned at least 1.5m above the floor and away from direct heat sources e.g. radiators.

NOTE:

Up to 5 fans (size 6" / 9") can be controlled by one XS-MFC

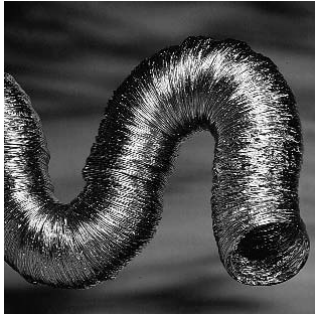
Up to 3 fans (size 12") can be controlled by one XS-MFC

Do not mix different fan sizes on the same controller.



Accessories

Ceiling Installation Accessories



Flexible Ducting and Installation Accessories

A full range of ducting and installation accessories is available from NuAire. Call NuAire on 02920 885231 to request literature.

“Installation Ancillaries” NuAire catalogue No.670812

3 Year Warranty

The three year warranty starts from the date of delivery covering faulty materials or workmanship and includes parts and labour for the first year.

The labour element is subject to full, free and safe access to the equipment as recommended by the CDM regulations. The remaining two years covers replacement parts only.

TERMS

This warranty applies to units installed and used in the United Kingdom. The equipment will be repaired or replaced at NuAire's cost provided that the appliance:

- 1. Has been installed and used in accordance with the fitting and wiring instructions supplied with each unit.*
- 2. Has not been connected to an unsuitable electrical supply. (The correct supply voltage is shown on the appliance rating label attached to the unit).*
- 3. Has not been modified or repaired by persons not authorised by NuAire.*
- 4. A unit returned to NuAire should be suitably protectively packaged and clearly marked with the 'returns number' obtained from NuAire prior to posting.*

NB

If you have any comments or queries on any of our products or services please write to the Marketing Services Manager at the main address opposite.

Technical or commercial considerations may, from time to time, make it necessary to alter the design, performance and dimensions of equipment and the right is reserved to make such changes without prior notice.

Maintenance

Periodically, at least once a year, or more frequently in case of heavy use, remove the dirt and encrustation from the grille(s) fan impeller and motor casing.

Ensure the impeller is not cracked or deformed and is able to rotate freely and without oscillation.

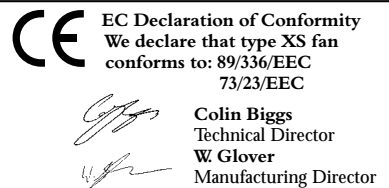
After Sales Support

As a manufacturer NuAire is aware that time is important. In the event of a breakdown of this equipment, it should be adequately packaged and returned to NuAire. **IMPORTANT!** Please telephone NuAire before posting your unit. We will give you a returns number to identify your package.

We will endeavour to repair or replace it within five working days of receipt. See our warranty terms.

NUAIRE

Western Industrial Estate, Caerphilly,
Mid Glam CF83 1XH United Kingdom.
Telephone: 02920 885911 Facsimile: 02920 887033,
Email@nuaire.co.uk



Leaflet No. 671052

GP 217