

## Wall fan kits Supply / Extract units

### NUAIRE

NuAire Limited  
Western Industrial Estate  
Caerphilly,  
Mid Glamorgan CF83 1XH  
Telephone: 029 20 885911  
Facsimile: 029 20 887033  
Email: info@nuaire.co.uk

Leaflet 671051

MAY 2009

### General Description

The NuAire XS Wall Fan Kit is available in 6", 9" and 12" impeller sizes suitable for supply or extract and can be the heart of a room's automatic ventilation system.

### Switching

Operated via a separately wired 3 amp fused spur (by others) or operated via the optional XS-MFC remote controller allowing supply or extract, variable speed and automatic or manual switching of several fans if desired (see page 6).

### Sensors

Sensors are available as remote units or integral 'plug in' units. They are able to control multiple fans, depending on sensor and fan types. Integral sensors are quick and easy to install and are aesthetically pleasing, whilst remote sensors give the benefit of location close to the pollutant source.

Remote sensors can be fitted with an optional security strap to prevent unwanted tampering.

The removable interior grille provides easy access while the external rotor motor makes for simple removal of the push-on

impeller for cleaning. Upward angled interior grille vanes shield workings from view and downward sloping external vanes throw off rain. The fan is IP24 splash proof approved with the motor rated at IP44.

All external components are made in soft grey colours from ultra violet stable, flame retardant ABS material so they will blend with most decors and will not fade in sunlight.

Wall Fan Kits are supplied as a complete package with all wall installation parts included.

### Contents

### Page

General Description / Dimensions .....	1
Installation .....	2
Wiring details .....	3
Integral sensors .....	4
Remote sensors / Remote switch .....	5
Ancillaries .....	8
Warranty .....	8

### Coding for WindowFan Kits

#### DESCRIPTION CODE

6" Wall Fan kit complete.....	XS6WA
9" Wall Fan kit complete.....	XS9WA
12" Wall Fan kit complete.....	XS12WA

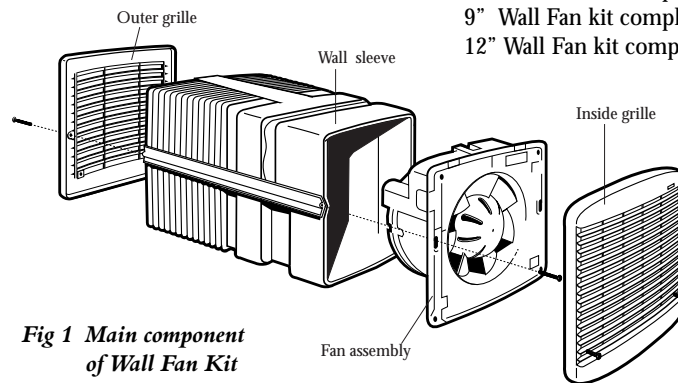
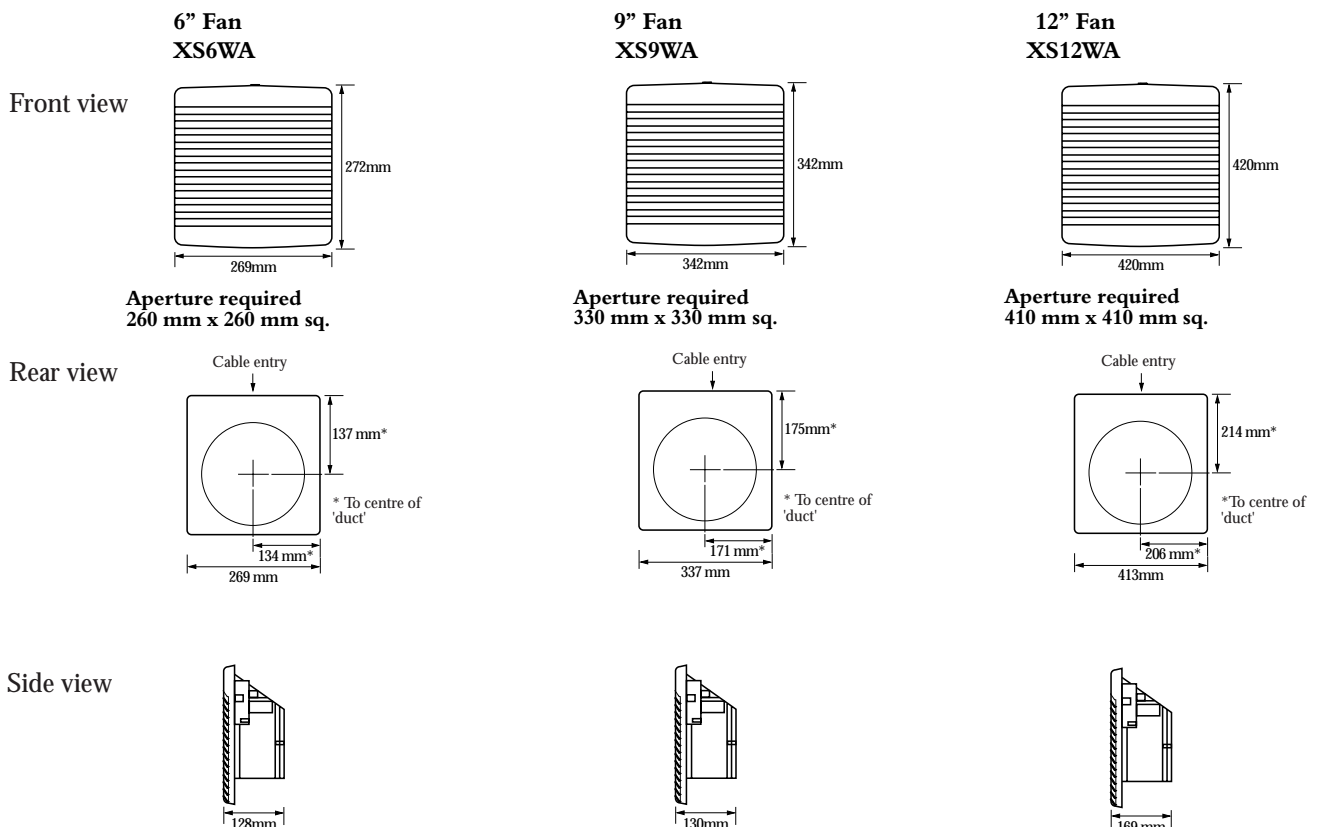


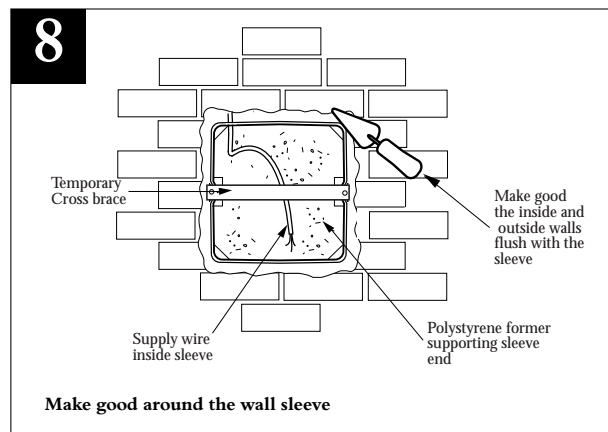
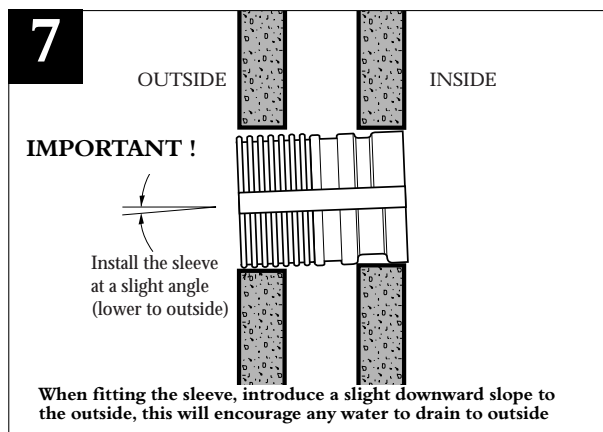
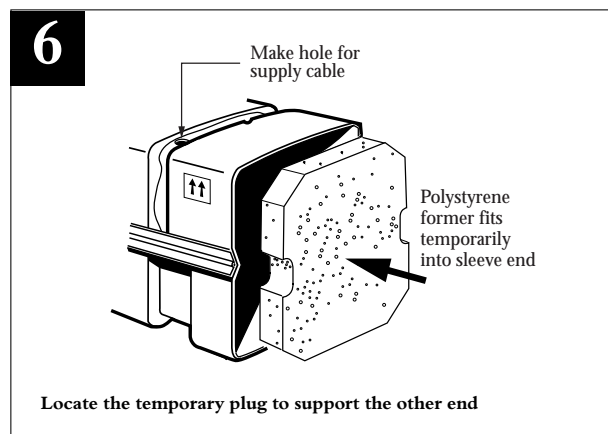
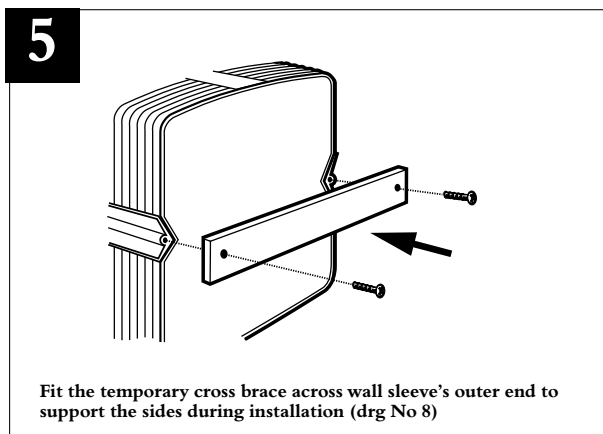
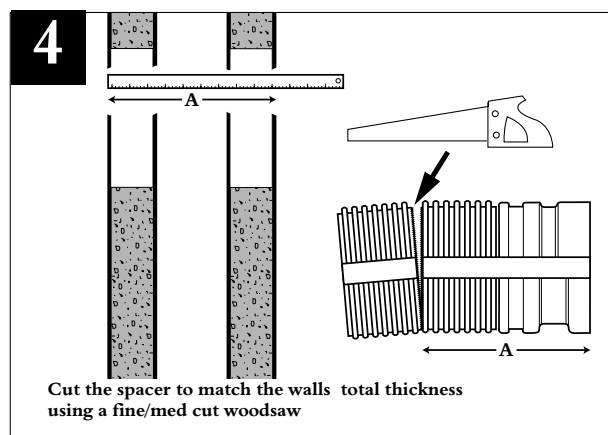
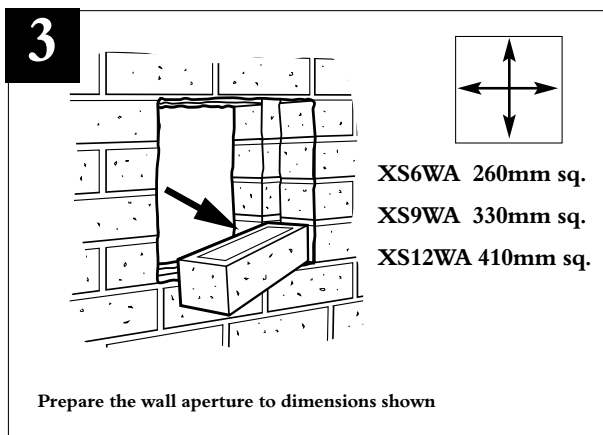
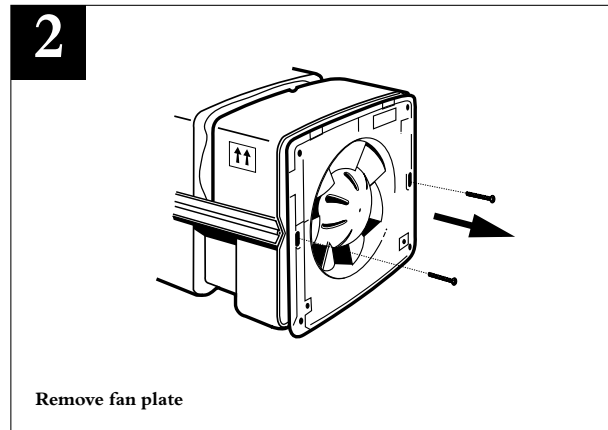
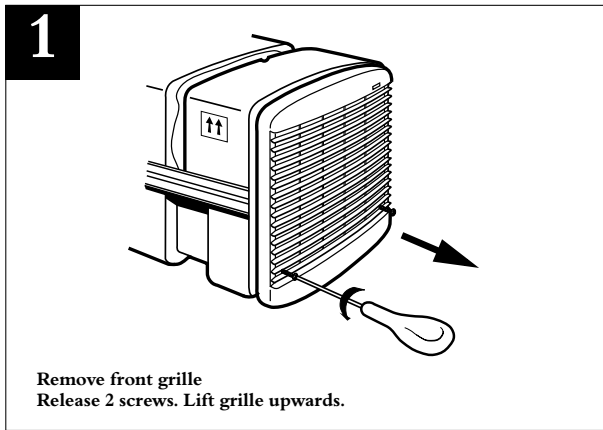
Fig 1 Main component of Wall Fan Kit

### Fig 2 Dimensions



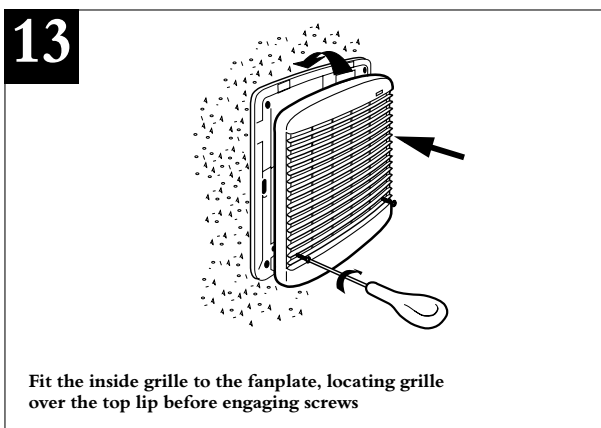
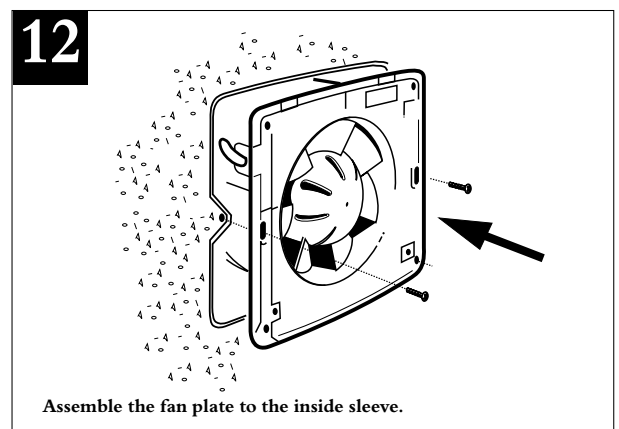
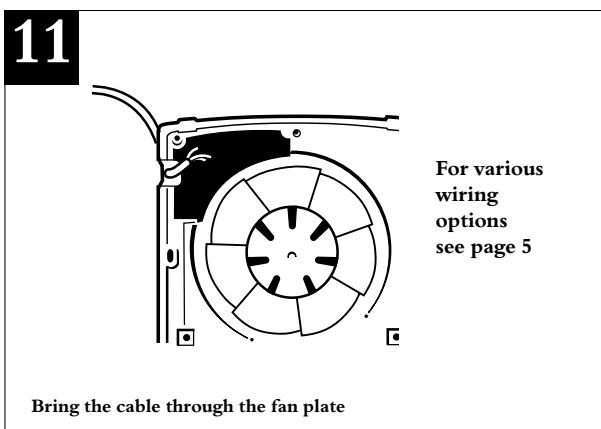
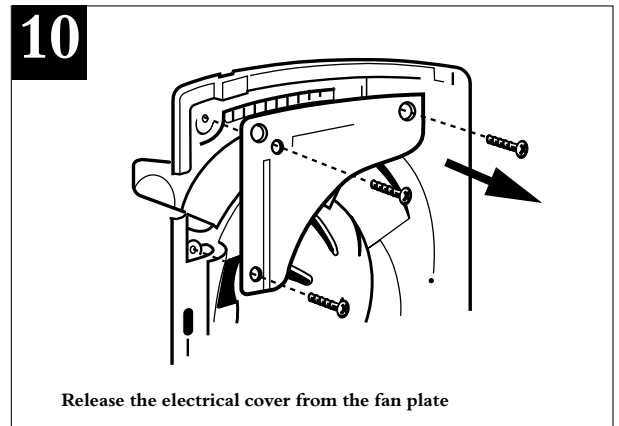
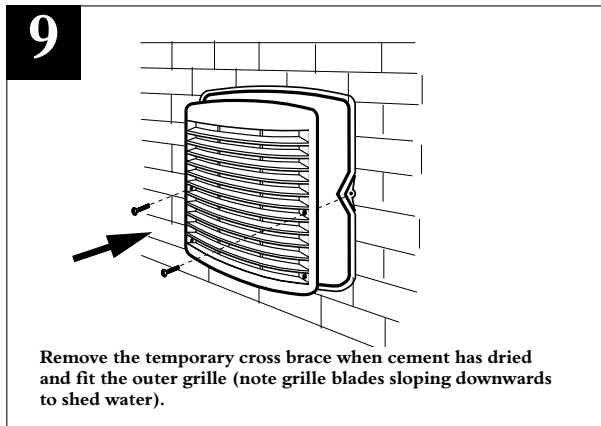
# Installation & Maintenance XS WALL FAN KITS

## Installation of Wall Fan kits



# Installation & Maintenance XS WALL FAN KITS

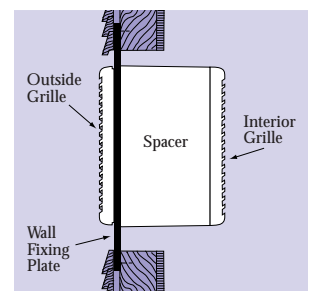
## Installation of Wall Fans



## Fitting Ancillaries (See also page 8 for details)

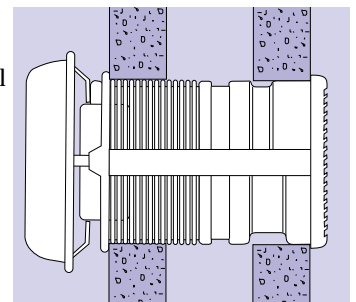
### Wall Fixing Plate & Spacer

This thin wall application is best covered using a Window Kit. Drg shows a Wall Fixing Plate fixed to the aperture by 4 screws. The Window Kit clamps together either side of the Wall Fixing Plate



### Weather Terminal

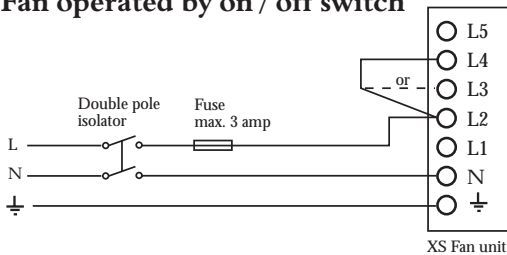
This wall application shows a Weather Terminal replacing the Outside Grille and is held in position using the grille fixing points. However, 2 longer (75mm) screws are provided. This Terminal is used for exposed site conditions



## NOTES:

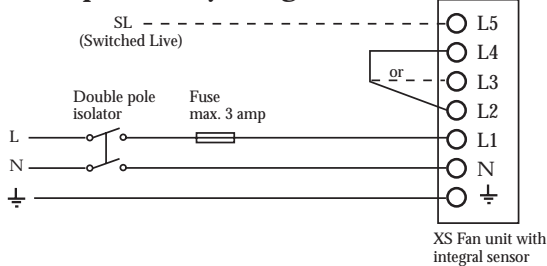
- 1) Ensure adequate air replacement for the fan and any fuel burning appliance in the room.
- 2) All electrical products should be wired and installed by a qualified electrician in accordance with the wiring regulations.
- 3) Always isolate the unit from the mains supply before carrying out any cleaning of the unit.
- 4) Do not use any solvents to clean this product.

### Fan operated by on / off switch



Connect link wire between L2 & L4 for extract  
or  
Connect link wire between L2 & L3 for supply

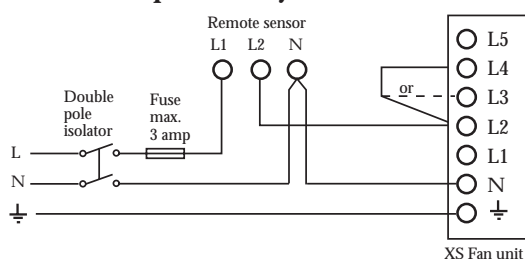
### Fan operated by integral sensor



Connect link wire between L2 & L4 for extract  
or  
Connect link wire between L2 & L3 for supply

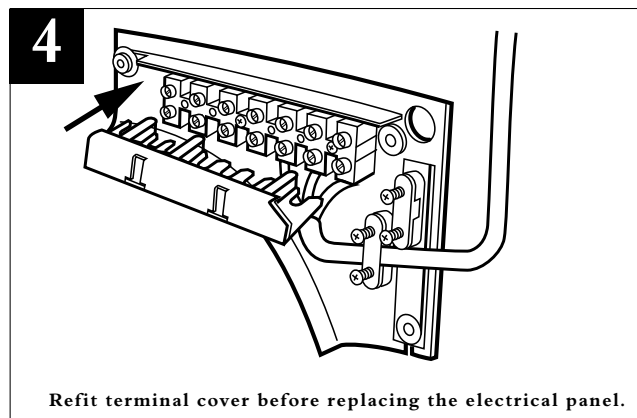
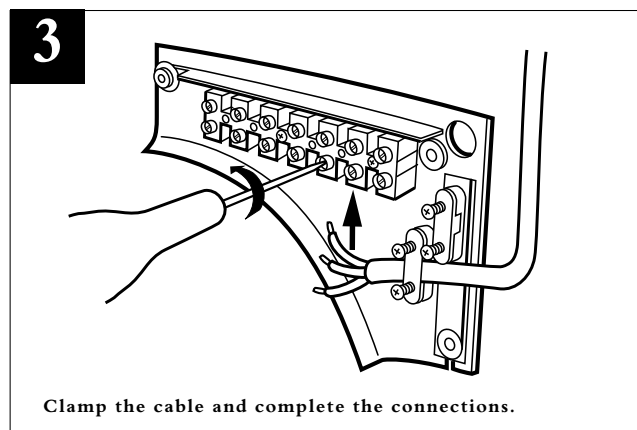
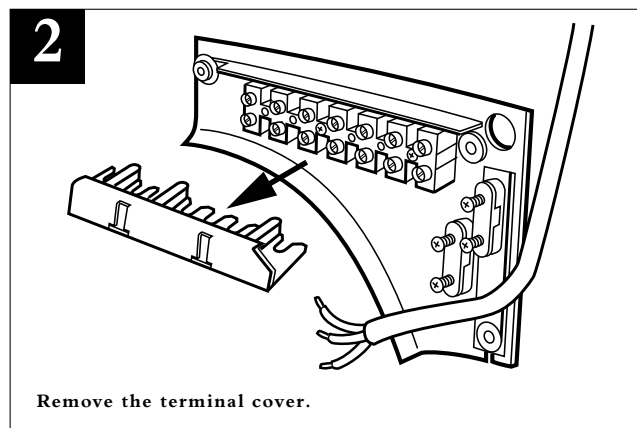
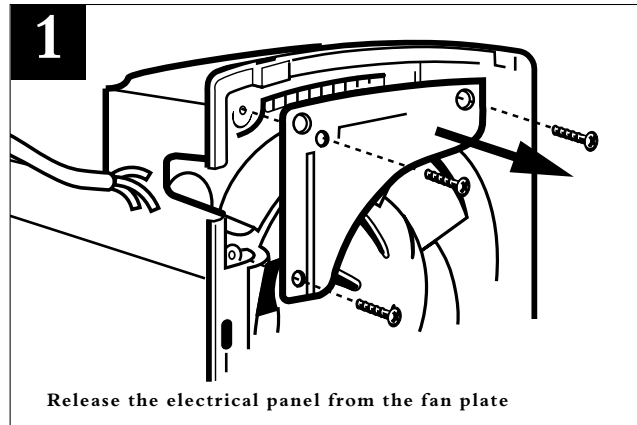
Connect switched live signal to L5 for integral timer module "TA"

### Basic fan operated by remote sensor



Connect link wire between L2 & L4 for extract  
or  
Connect link wire between L2 & L3 for supply

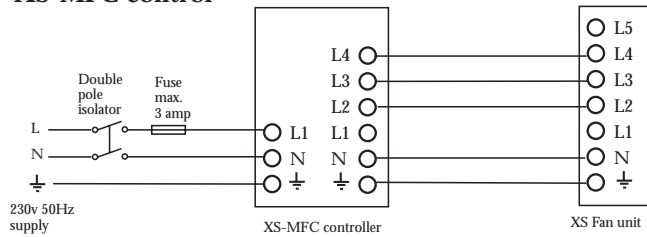
## Electrical Wiring Instructions



# Installation & Maintenance XS WALL FAN KITS

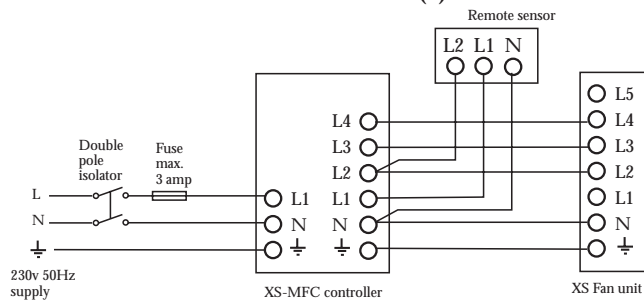
## Electrical Wiring Instructions .. continued

### Supply / Extract fan operated via remote XS-MFC control



Remote switch may be set: On / Off, Forward / Reverse, Economy / Std. (variable speed), Auto / Manual.

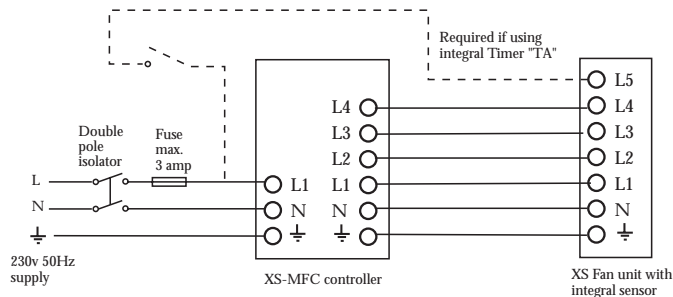
### Supply / Extract fan operated via remote XS-MFC control & Remote Sensor(s)



Remote switch may be set: On / Off, Forward / Reverse, Economy / Std. (variable speed), Auto / Manual.

One or more Remote Sensors may be wired in parallel to one XS-MFC Control.  
Humidity Sensor: XS-HR, Air Quality Sensor: X S-AQR  
Passive Infra Red Sensor: XS-PIRR,

### Supply / Extract fan operated via remote XS-MFC control and Integral Sensor



Remote switch may be set: On / Off, Forward / Reverse, Economy / Std. (variable speed), Auto / Manual.

Maximum one Integral Sensor per fan 6/9/12 denotes unit size identity  
Humidity Sensor: XS-H6/9/12, Air Quality Sensor: XS-AQ6/9/12  
Passive Infra Red Sensor: XS-PIR6/9/12, Temperature Sensor: XS-TH6/9/12  
Run on Timer: XS-TA6/9/12

A single sensor will switch all fans if more than one fan is being operated by a single XS-MFC controller.

#### NOTE:

Multi-fan options:

Up to 5 fans (size 6" / 9") can be controlled by one XS-MFC.

Up to 3 fans (size 12") can be controlled by one XS-MFC.

Do not mix different fan sizes on the same controller.

## 6" Fan XS6WA

### Consumption and weight

Model	Input Power Watts		Weight kg
	Max.	Economy	
XS6WA supply + extract	38	20	4.7

Note figures are for extract only

### Electrical Specification

230V ~ 50Hz Class I. Motor thermally protected by overload device. Cable: 1mm max. or min. Fuse: 3 amp (if fan is supplied from a 5A lighting circuit, no local fuse is required).

## 9" Fan XS9WA

### Consumption and weight

Model	Input Power Watts		Weight kg
	Max.	Economy	
XS9WA supply + extract	50	37	6.5

Note figures are for extract only

### Electrical Specification

230V ~ 50Hz Class I. Motor thermally protected by overload device. Cable: 1mm max. or min. Fuse: 3 amp (if fan is supplied from a 5A lighting circuit, no local fuse is required).

## 12" Fan XS12WA

### Consumption and weight

Model	Input Power Watts		Weight kg
	Max.	Economy	
XS12WAsupply + extract	100	70	9.4

Note figures are for extract only

### Electrical Specification

230V ~ 50Hz Class I. Motor thermally protected by overload device. Cable: 1mm max. or min. Fuse: 3 amp (if fan is supplied from a 5A lighting circuit, no local fuse is required).

**IMPORTANT NOTE**  
**(Shutter operation XS fans)**  
There will be a short delay on startup and shutdown of approximately 40 seconds.  
This is normal.

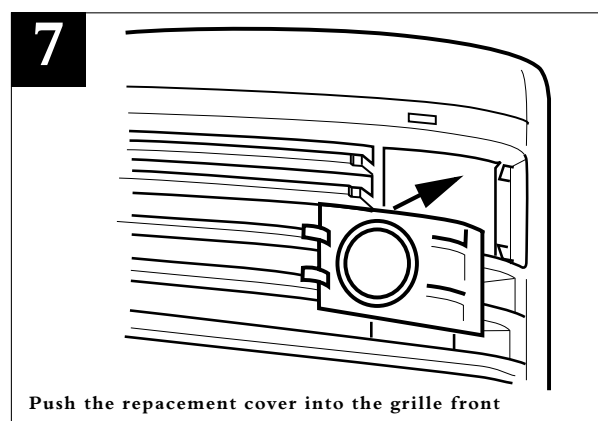
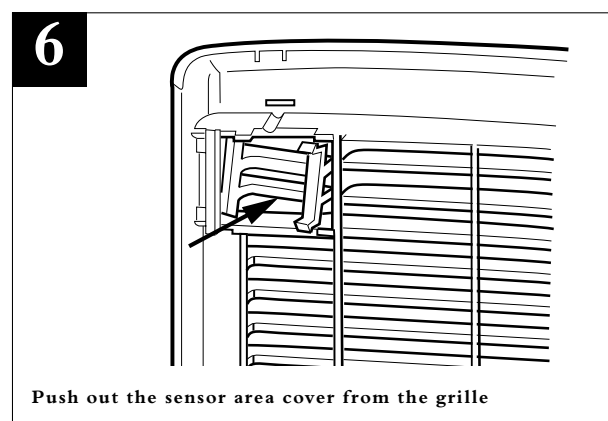
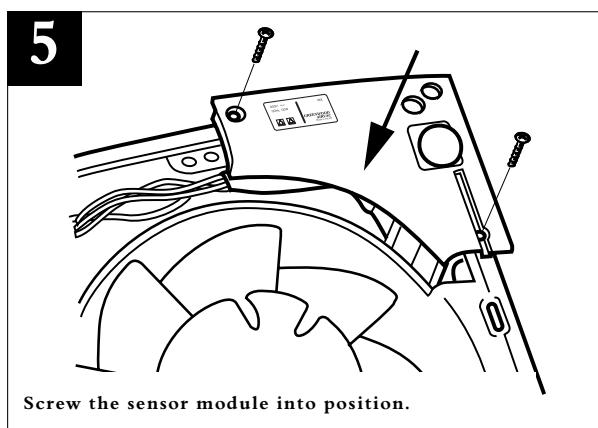
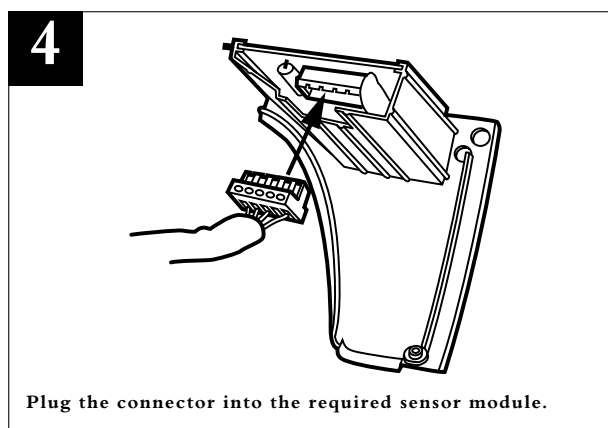
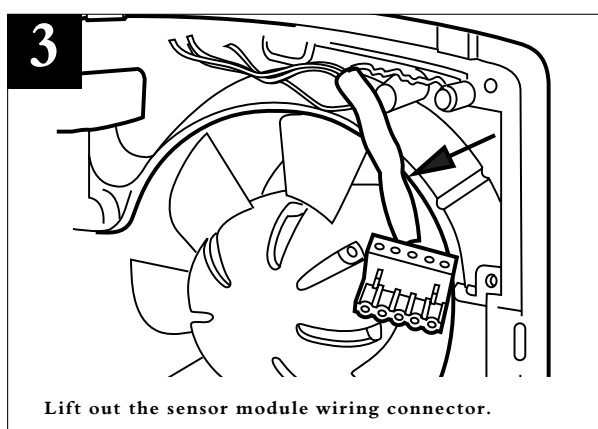
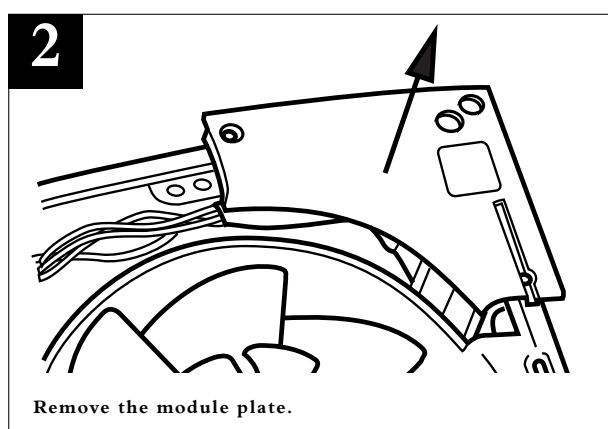
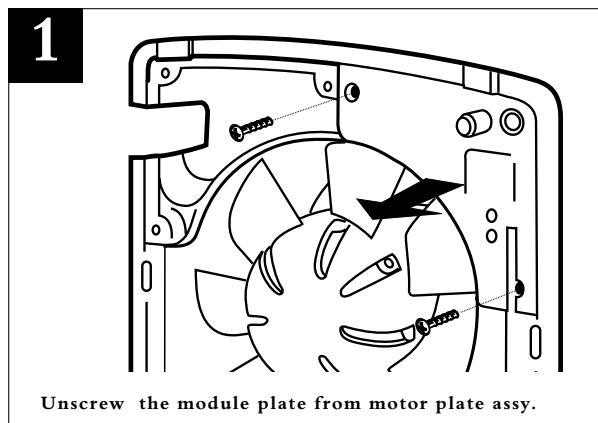
# Installation & Maintenance XS WALL FAN KITS

## Installation of Wall Fans (continued)

### Fitting Integral Sensors (optional)

Note:  
Before following the pictorial sequence shown- first remove the fans front cover grille (2 screws). Release the four main corner screws and lift out the motor/fan plate assembly. Remove the electrical coverplate opposite the sensor plate refer to page 5 if needed.

Follow the pictorial sequence on this page.



# Installation & Maintenance XS WALL FAN KITS

## Fitting Remote Controller XS-MFC or Remote Sensors (optional)

The XS-MFC Multi Fan Control provides supply or extract, variable speed and automatic or manual switching of several fans if desired, (see note below).

The control is best mounted approx 1.5m above the floor. Remote Sensors are available for Humidity, Air Quality and Passive Infra Red control.

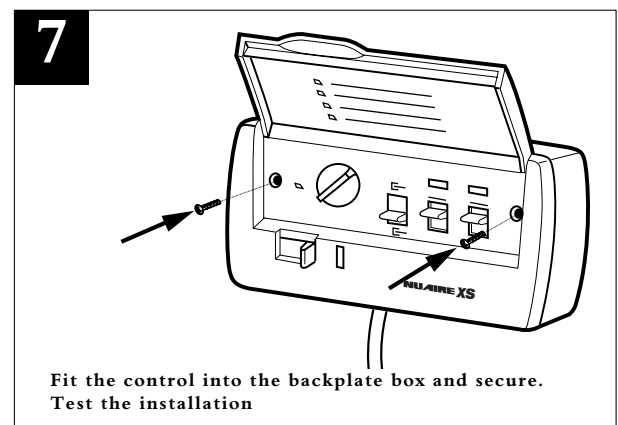
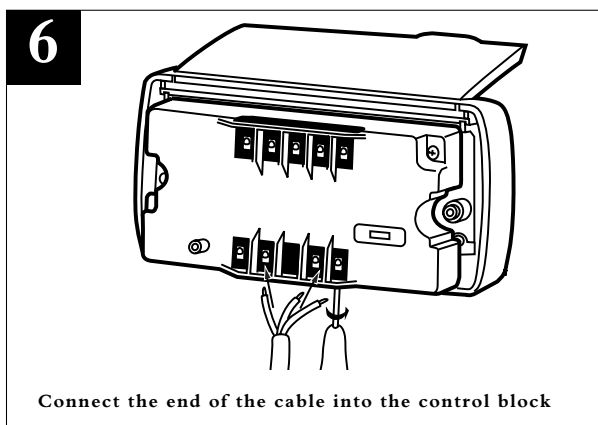
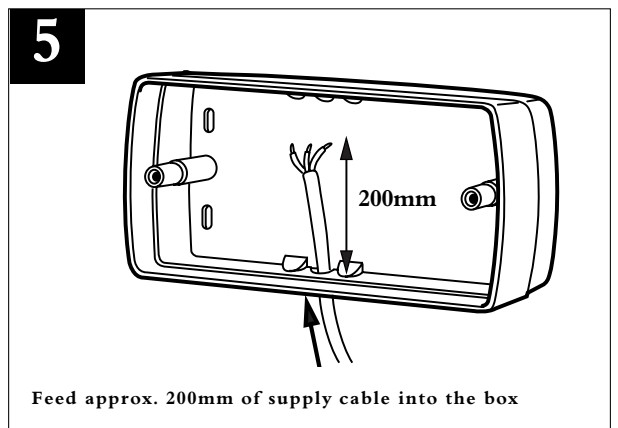
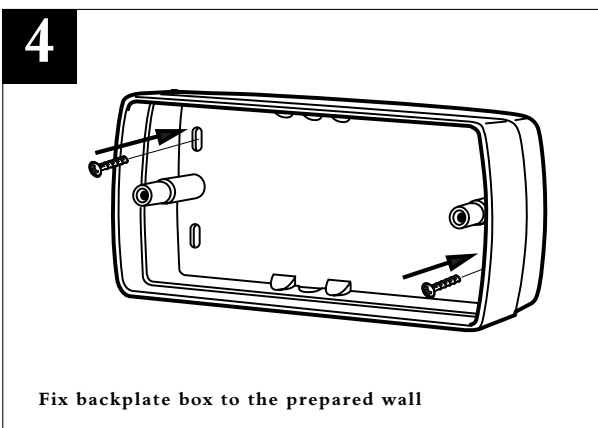
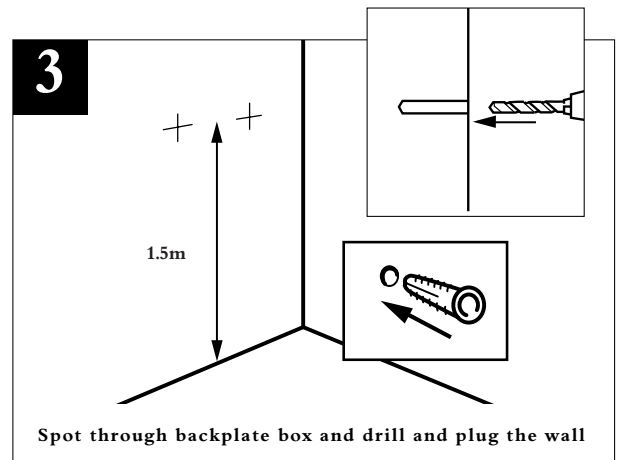
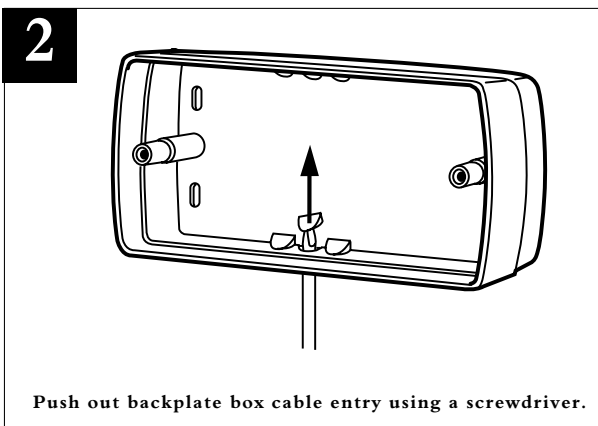
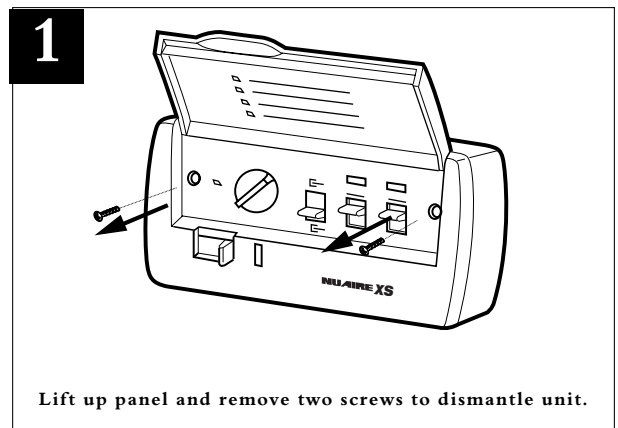
Remote Sensors should be positioned at least 1.5m above the floor and away from direct heat sources e.g. radiators.

NOTE:

Up to 5 fans (size 6" / 9") can be controlled by one XS-MFC

Up to 3 fans (size 12") can be controlled by one XS-MFC

Do not mix different fan sizes on the same controller.



# Installation & Maintenance XS WALL FAN KITS

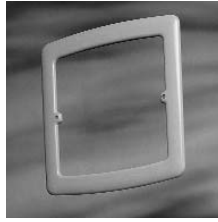


## Weather Terminal.

Used for exposed site wall installations, comprising one weather terminal. Manufactured from HIPS

Order Code XS-WT6  
Dimensions: 360 x 360 x 170  
Order Code XS-WT9  
Dimensions: 425 x 425 x 180  
Order Code XS-WT12  
Dimensions: 506 x 506 x 185

Unit replaces the outside grille and is supplied with installation details.

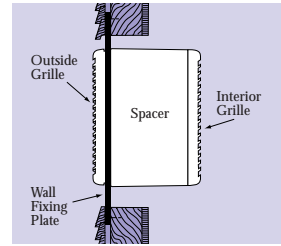


## Picture Frame Adaptor.

Used to conceal uneven wall installations, comprising one picture frame Adaptor. Manufactured from HIPS

Order Code XS-PF6  
Dimensions: 330 x 335 x 20  
Order Code XS-PF9  
Dimensions: 405 x 425 x 20  
Order Code XS-PF12  
Dimensions: 495 x 510 x 25

Unit replaces the outside grille and is supplied with installation details.



## Thin Wall Applications

For thin wall applications we actually recommend the use of a **Window Fan Kit** used in conjunction with a Wall Fixing Plate

This thin wall application shows a Wall Fixing Plate fixed to the aperture (4 screws).

The Window Fan Spacer and Outside Grille clamp together either side of the Wall Fixing Plate to support the Fan and Interior Grille.

## 3 Year Warranty

The three year warranty starts from the date of delivery covering faulty materials or workmanship and includes parts and labour for the first year.

The labour element is subject to full, free and safe access to the equipment as recommended by the CDM regulations. The remaining two years covers replacement parts only.

### TERMS

*This warranty applies to units installed and used in the United Kingdom. The equipment will be repaired or replaced at NuAire's cost provided that the appliance:*

- 1. Has been installed and used in accordance with the fitting and wiring instructions supplied with each unit.*
- 2. Has not been connected to an unsuitable electrical supply. (The correct supply voltage is shown on the appliance rating label attached to the unit).*
- 3. Has not been modified or repaired by persons not authorised by NuAire.*
- 4. A unit returned to NuAire should be suitably protectively packaged and clearly marked with the 'returns number' obtained from NuAire prior to posting.*

### NB

If you have any comments or queries on any of our products or services please write to the Marketing Services Manager at the main address opposite.

*Technical or commercial considerations may, from time to time, make it necessary to alter the design, performance and dimensions of equipment and the right is reserved to make such changes without prior notice.*

## Maintenance

Periodically, at least once a year, or more frequently in case of heavy use, remove the dirt and encrustation from the grille(s) fan impeller and motor casing.

Ensure the impeller is not cracked or deformed and is able to rotate freely and without oscillation.

## After Sales Support

As a manufacturer NuAire is aware that time is important. In the event of a breakdown of this equipment, it should be adequately packaged and returned to NuAire. **IMPORTANT!** Please telephone NuAire before posting your unit. We will give you a returns number to identify your package.

We will endeavour to repair or replace it within five working days of receipt. See our warranty terms.

# NUAIRE

Western Industrial Estate, Caerphilly,  
Mid Glam CF83 1XH United Kingdom.  
Telephone: 02920 885911 Facsimile: 02920 887033,  
Email@nuaire.co.uk



EC Declaration of Conformity  
We declare that type XS fan  
conforms to: 89/336/EEC  
73/23/EEC

Colin Biggs  
Technical Director  
W. Glover  
Manufacturing Director

Leaflet No. 671051

GP 216