

## Window fan kits Supply / Extract units

### NUAIRE

NuAire Limited  
Western Industrial Estate  
Caerphilly,  
Mid Glamorgan CF83 1XH  
Telephone: 029 20 885911  
Facsimile: 029 20 887033  
Email: info@nuaire.co.uk

Leaflet 671050

MAY 2009

### General Description

The NuAire XS Window Fan Kit is available in 6", 9" and 12" impeller sizes suitable for supply or extract and can be the heart of a room's automatic ventilation system.

#### Switching

Operated via a separately wired 3 amp fused spur (by others) or operated via the optional XS-MFC remote controller allowing supply or extract, variable speed and automatic or manual switching of several fans if desired (see page 6).

#### Sensors

Sensors are available as remote units or integral 'plug in' units. They are able to control multiple fans, depending on sensor and fan types. Integral sensors are quick and easy to install and are aesthetically pleasing, whilst remote sensors give the benefit of location close to the pollutant source.

Remote sensors can be fitted with an optional security strap to prevent unwanted tampering.

The removable interior grille provides easy access while the external rotor motor makes for simple removal of the push-on

impeller for cleaning. Upward angled interior grille vanes shield workings from view and downward sloping external vanes throw off rain. The fan is IP24 splash proof approved with the motor rated at IP44.

All external components are made in soft grey colours from ultra violet stable, flame retardant ABS material so they will blend with most decors and will not fade in sunlight.

Window Fan Kits are supplied as a complete package with all window installation parts included.

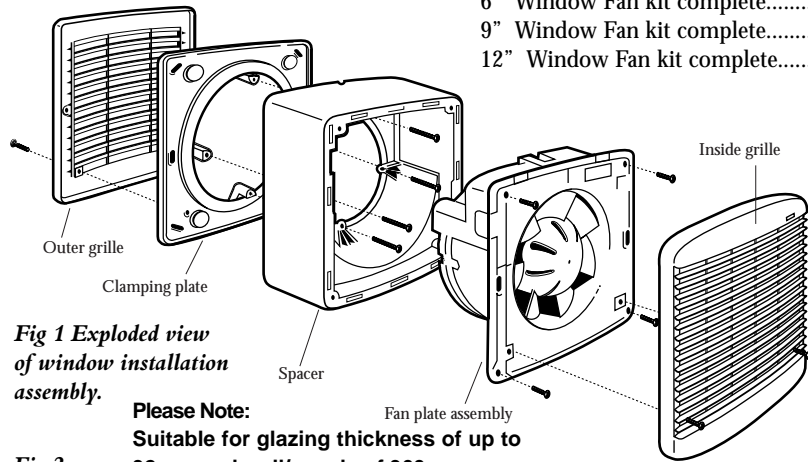
### Contents

### Page

General Description / Dimensions	1
Installation	2
Wiring details	3
Integral sensors	4
Remote sensors / Remote switch	5
Ancillaries	8
Warranty	8

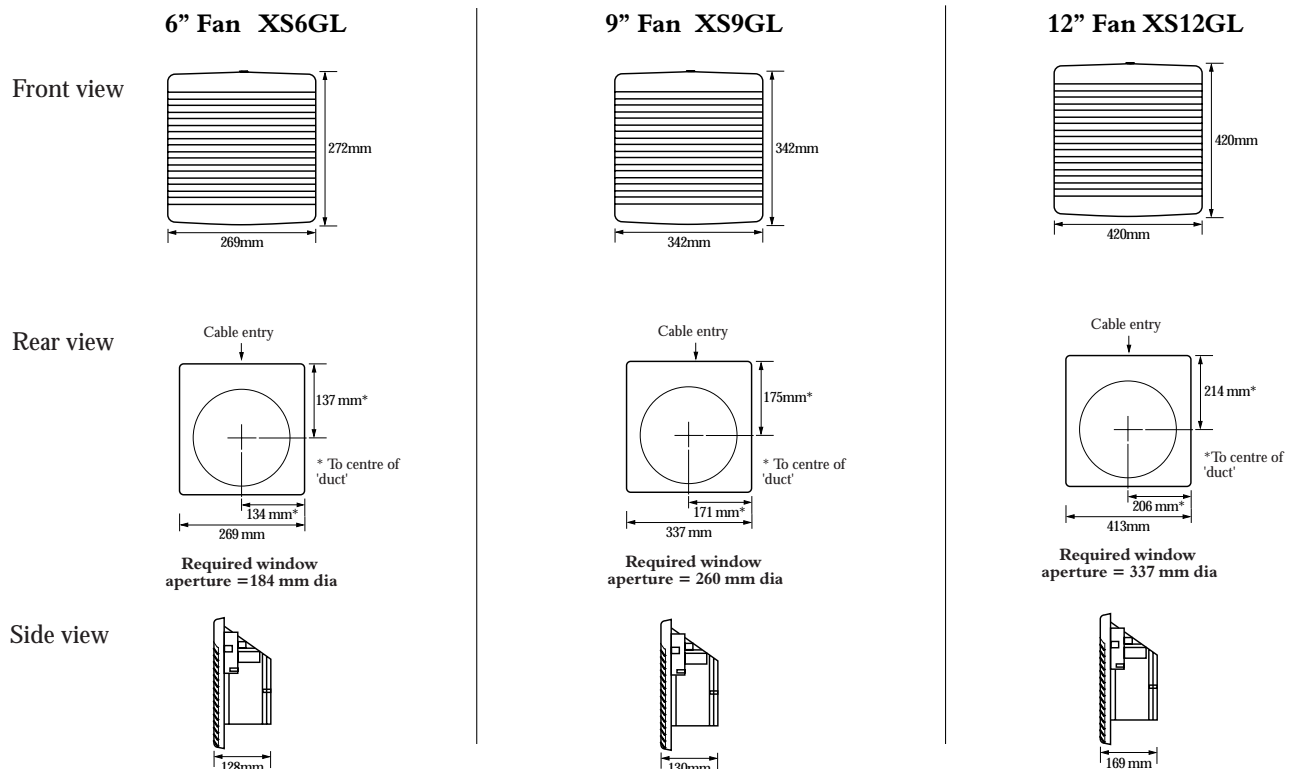
### Coding for WindowFan Kits

DESCRIPTION	CODE
6" Window Fan kit complete.....	XS6GL
9" Window Fan kit complete.....	XS9GL
12" Window Fan kit complete.....	XS12GL



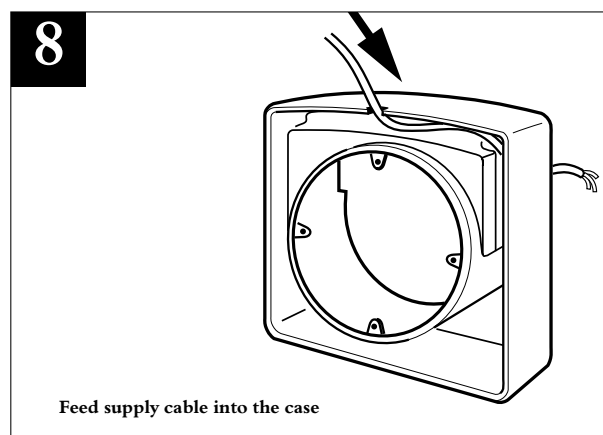
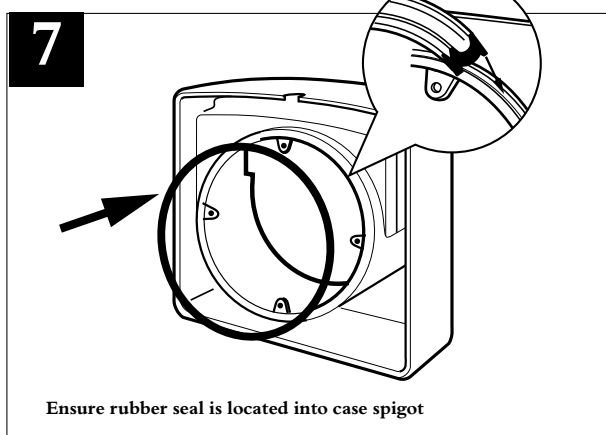
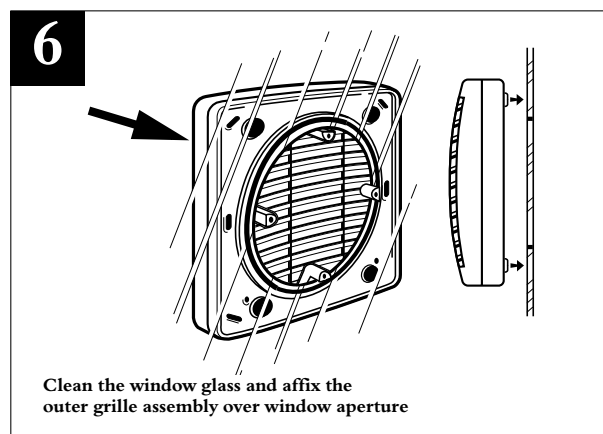
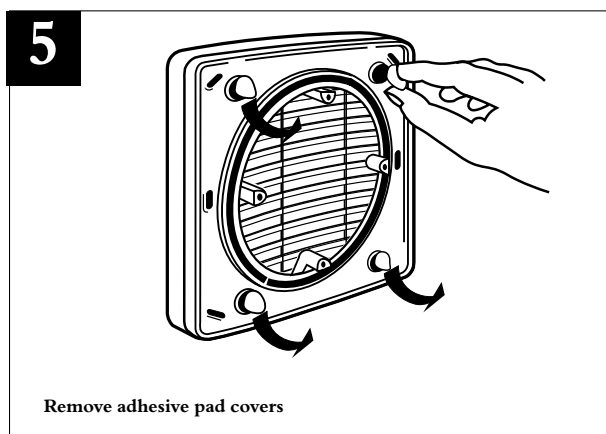
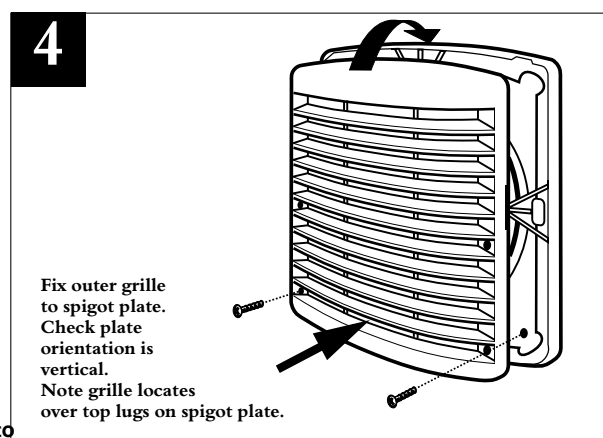
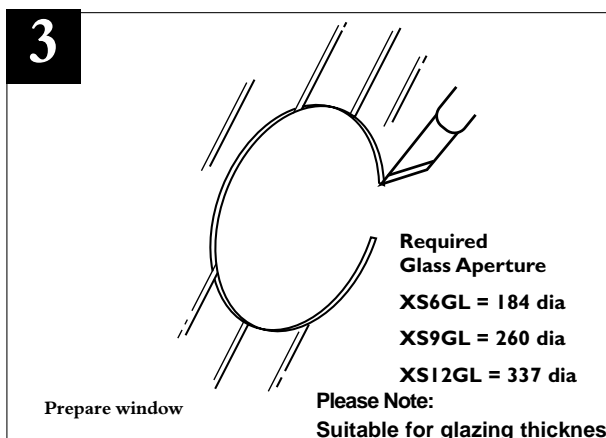
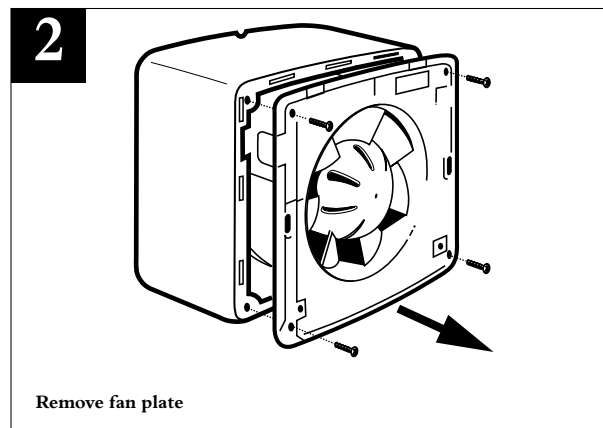
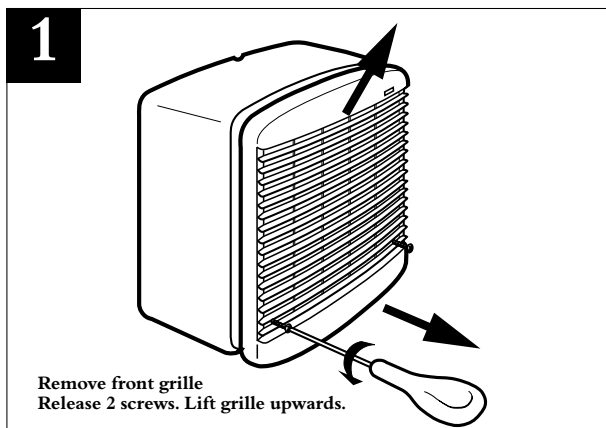
**Please Note:**  
Suitable for glazing thickness of up to 32mm and wall/panels of 360mm

### Dimensions of Window Fans Fig 2



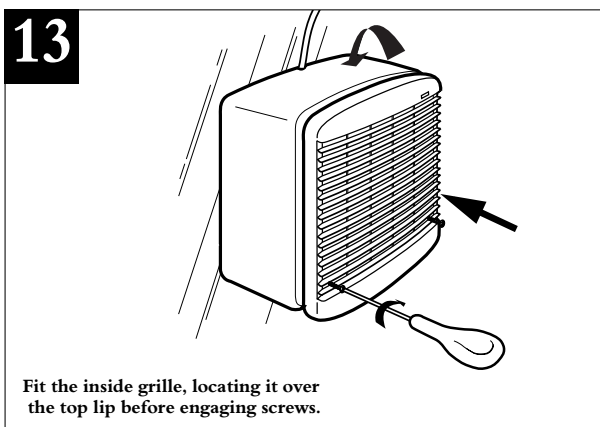
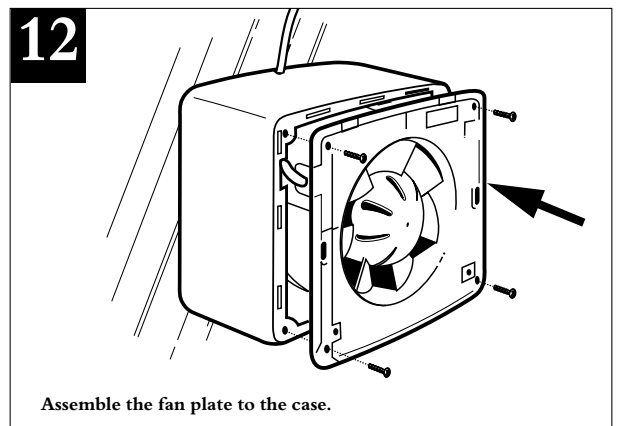
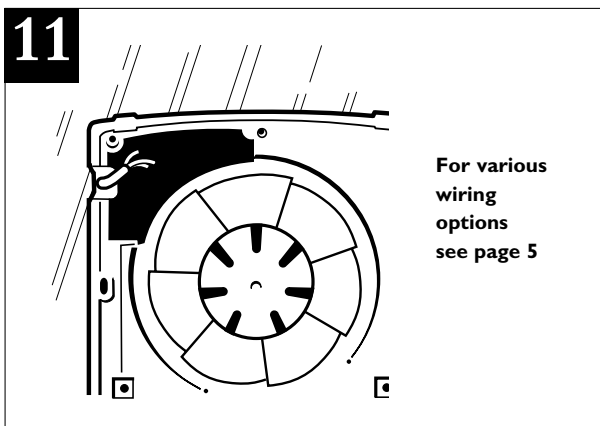
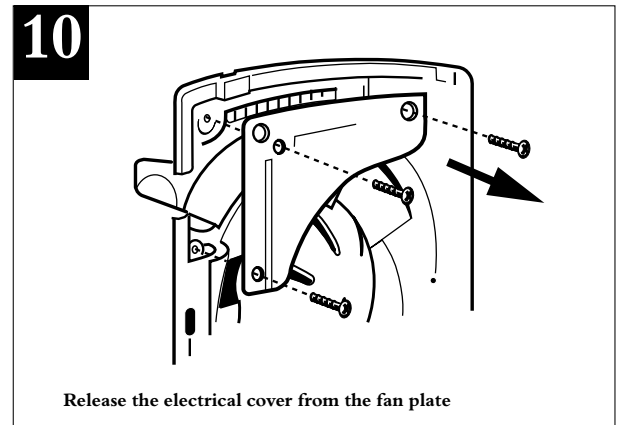
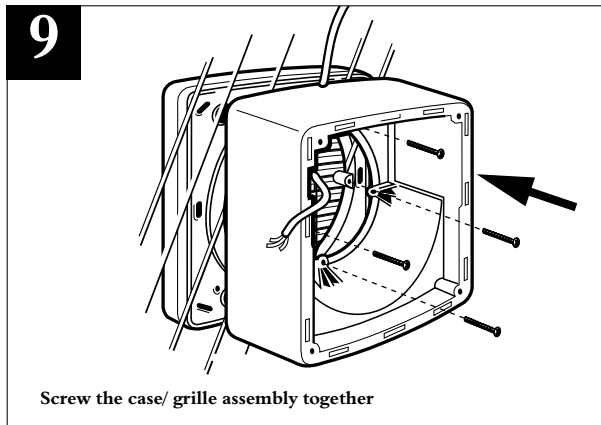
# Installation & Maintenance XS WINDOW FAN KITS

## Installation of Window Fans



# Installation & Maintenance XS WINDOW FAN KITS

## Installation of Window Fans



### Fitting Ancillaries

(See also page 8 for details)

#### Weather Terminal

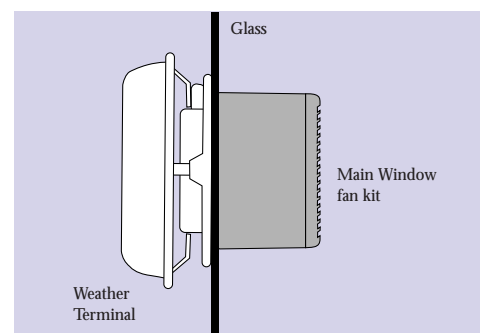
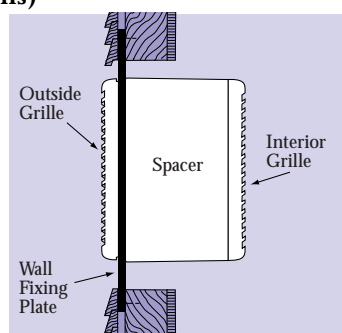
The optional Weather Terminal is offered for use in exposed site conditions. The illustration shows the Weather Terminal installed replacing the Outside Grille assembly. Terminal is held in position using the same fixings as the Outside Grille assembly. The base of the Terminal incorporates a foam strip which is designed to adhere to the glass surface assisting fitting and also as a seal for the joint when assembled together with the fan unit.

### Fitting Ancillaries

(See also page 8 for details)

#### Thin wall installation

The diagram shows the unit installed in a timber wall. A Wall Fixing Plate is used to support the fan assembly and the installation is similar to that for a window.

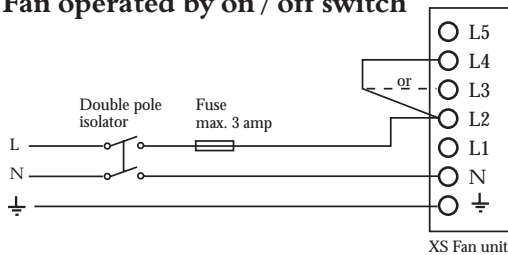


## NOTES:

- 1) Ensure adequate air replacement for the fan and any fuel burning appliance in the room.
- 2) All electrical products should be wired and installed by a qualified electrician in accordance with the wiring regulations.
- 3) Always isolate the unit from the mains supply before carrying out any cleaning of the unit.
- 4) Do not use any solvents to clean this product.

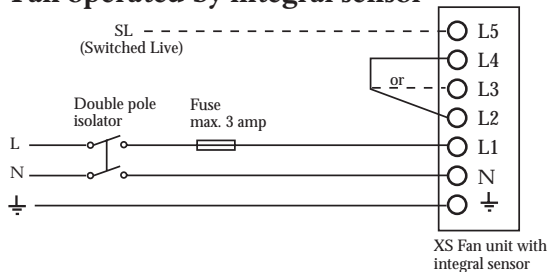
## Electrical Wiring Instructions

### Fan operated by on / off switch



Connect link wire between L2 & L4 for extract  
or  
Connect link wire between L2 & L3 for supply

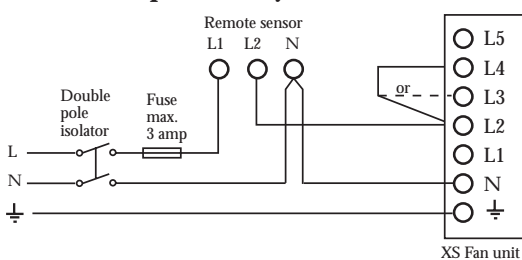
### Fan operated by integral sensor



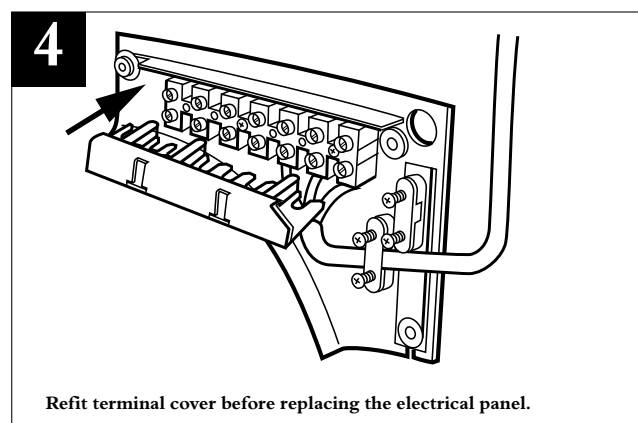
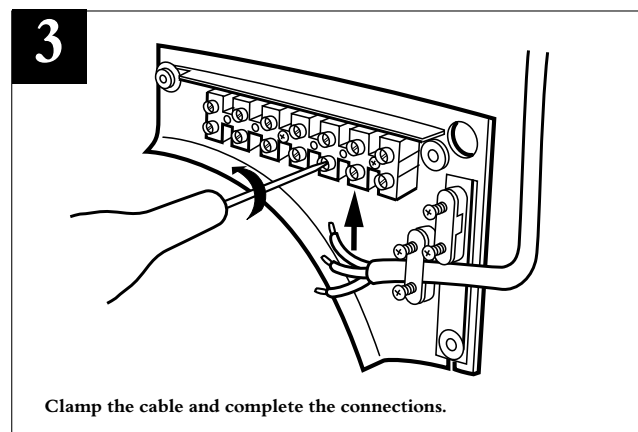
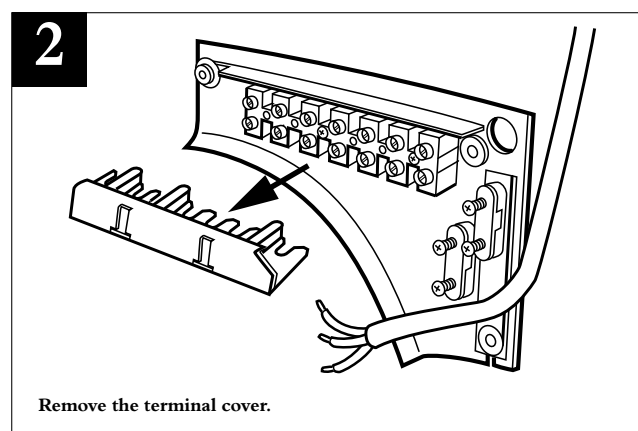
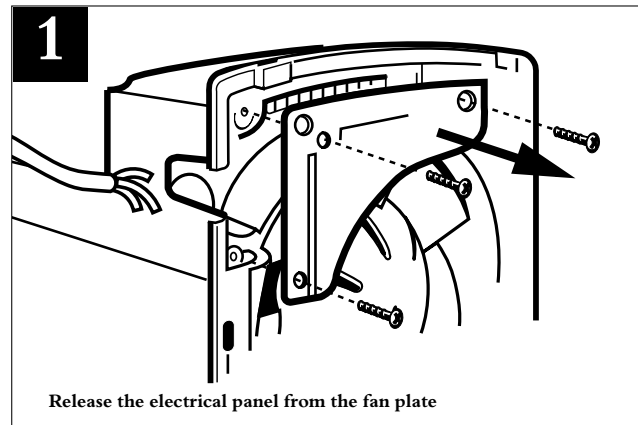
Connect link wire between L2 & L4 for extract  
or  
Connect link wire between L2 & L3 for supply

Connect switched live signal to L5 for integral timer module "TA"

### Basic fan operated by remote sensor



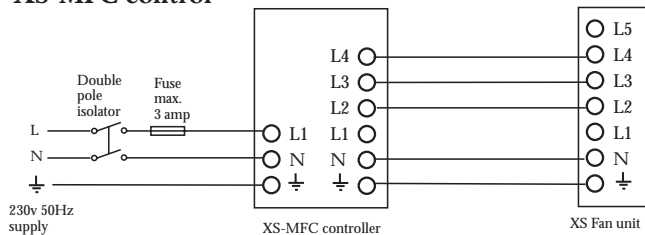
Connect link wire between L2 & L4 for extract  
or  
Connect link wire between L2 & L3 for supply



# Installation & Maintenance **XS** WINDOW FAN KITS

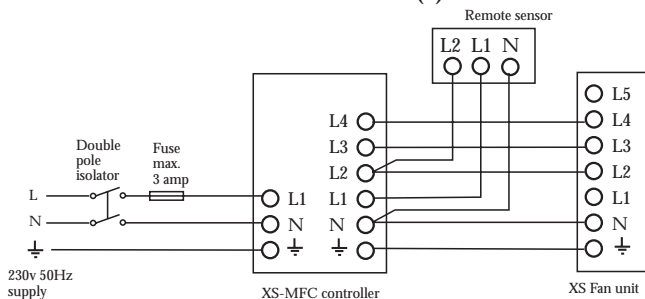
## Electrical Wiring Instructions .. continued

### Supply / Extract fan operated via remote XS-MFC control



Remote switch may be set: On / Off, Forward / Reverse, Economy / Std. (variable speed), Auto / Manual.

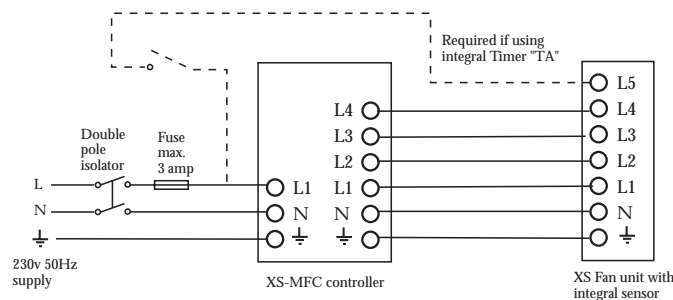
### Supply / Extract fan operated via remote XS-MFC control & Remote Sensor(s)



Remote switch may be set: On / Off, Forward / Reverse, Economy / Std. (variable speed), Auto / Manual.

One or more Remote Sensors may be wired in parallel to one XS-MFC Control.  
Humidity Sensor: XS-HR, Air Quality Sensor: XS-AQR  
Passive Infra Red Sensor: XS-PIRR,

### Supply / Extract fan operated via remote XS-MFC control and Integral Sensor



Remote switch may be set: On / Off, Forward / Reverse, Economy / Std. (variable speed), Auto / Manual.

Maximum one Integral Sensor per fan 6/9/12 denotes unit size identity  
Humidity Sensor: XS-H6/9/12, Air Quality Sensor: XS-AQ6/9/12  
Passive Infra Red Sensor: XS-PIR6/9/12, Temperature Sensor: XS-TH6/9/12  
Run on Timer: XS-TA6/9/12

A single sensor will switch all fans if more than one fan is being operated by a single XS-MFC controller.

#### NOTE:

Multi-fan options:  
Up to 5 fans (size 6" / 9") can be controlled by one XS-MFC.  
Up to 3 fans (size 12") can be controlled by one XS-MFC.  
Do not mix different fan sizes on the same controller.

## 6" Fan XS6GL

### Consumption and weight

Model	Input Power Watts		Weight kg
	Max.	Economy	
XS6GL supply + extract	38	20	4.1

Note figures are for extract only

### Electrical Specification

230V ~ 50Hz Class I. Motor thermally protected by overload device. Cable: 1mm max. or min. Fuse: 3 amp (if fan is supplied from a 5A lighting circuit, no local fuse is required).

## 9" Fan XS9GL

### Consumption and weight

Model	Input Power Watts		Weight kg
	Max.	Economy	
XS9GL supply + extract	50	37	5.7

Note figures are for extract only

### Electrical Specification

230V ~ 50Hz Class I. Motor thermally protected by overload device. Cable: 1mm max. or min. Fuse: 3 amp (if fan is supplied from a 5A lighting circuit, no local fuse is required).

## 12" Fan XS12GL

### Consumption and weight

Model	Input Power Watts		Weight kg
	Max.	Economy	
XS12GL supply + extract	100	70	8.6

Note figures are for extract only

### Electrical Specification

230V ~ 50Hz Class I. Motor thermally protected by overload device. Cable: 1mm max. or min. Fuse: 3 amp (if fan is supplied from a 5A lighting circuit, no local fuse is required).

**IMPORTANT NOTE**  
**(Shutter Operation XS fans)**  
There will be a short delay on startup and shutdown of approximately 40 seconds.  
This is normal.

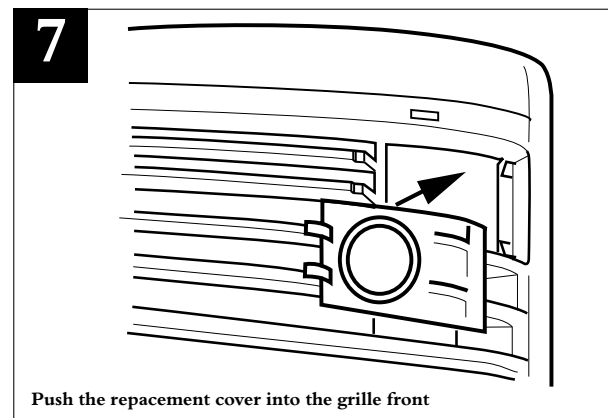
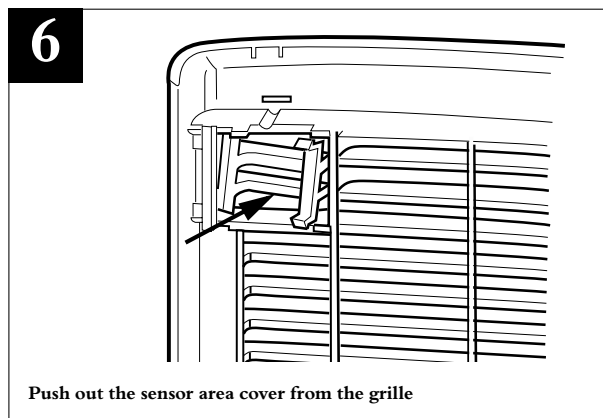
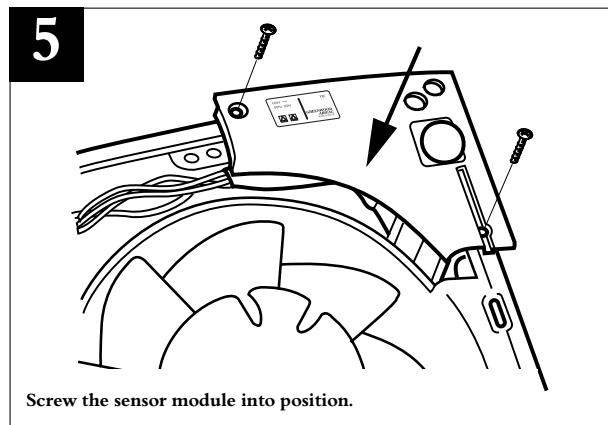
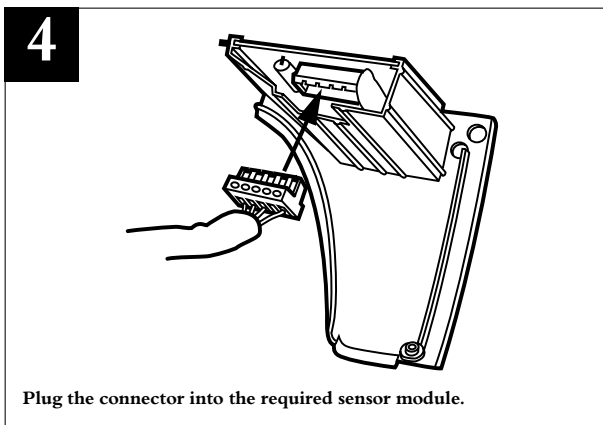
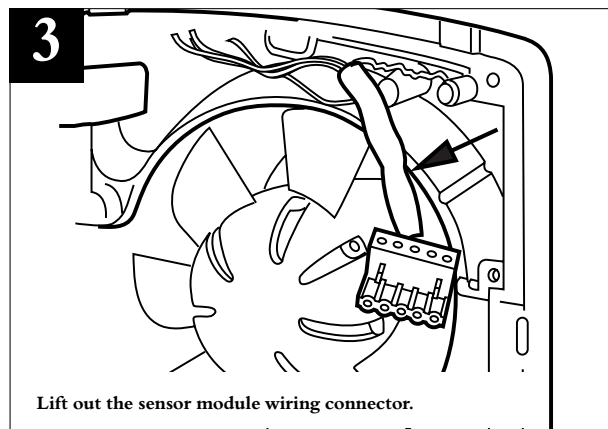
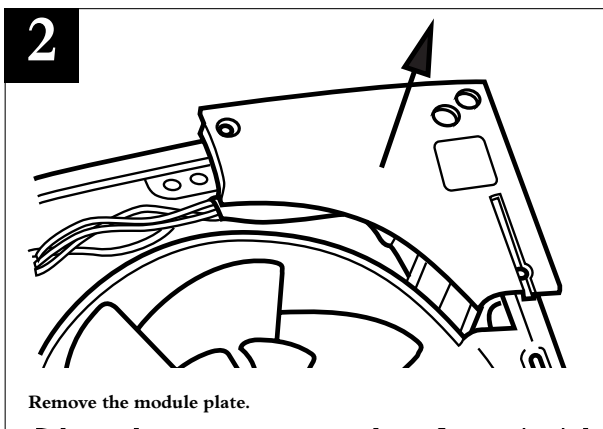
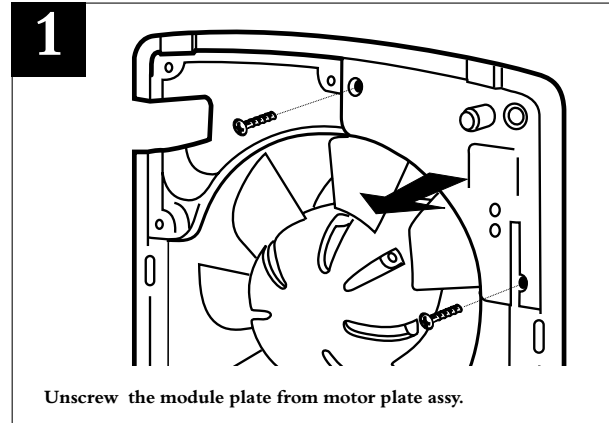
# Installation & Maintenance XS WINDOW FAN KITS

## Installation of Window Fans (continued)

### Fitting Integral Sensors (optional)

Note:  
Before following the pictorial sequence shown- first remove the fans front cover grille (2 screws). Release the four main corner screws and lift out the motor/fan plate assembly. Remove the electrical coverplate opposite the sensor plate refer to page 5 if needed.

Follow the pictorial sequence on this page.



## Fitting Remote Controller XS-MFC or Remote Sensors (optional)

The XS-MFC Multi Fan Control provides supply or extract, variable speed and automatic or manual switching of several fans if desired, (see note below).

The control is best mounted approx 1.5m above the floor. Remote Sensors are available for Humidity, Air Quality and Passive Infra Red control.

Remote Sensors should be positioned at least 1.5m above the floor and away from direct heat sources e.g. radiators.

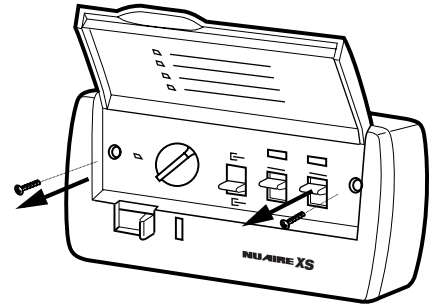
### NOTE:

Up to 5 fans (size 6" / 9") can be controlled by one XS-MFC

Up to 3 fans (size 12") can be controlled by one XS-MFC

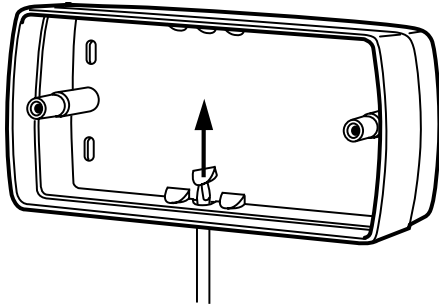
Do not mix different fan sizes on the same controller.

1



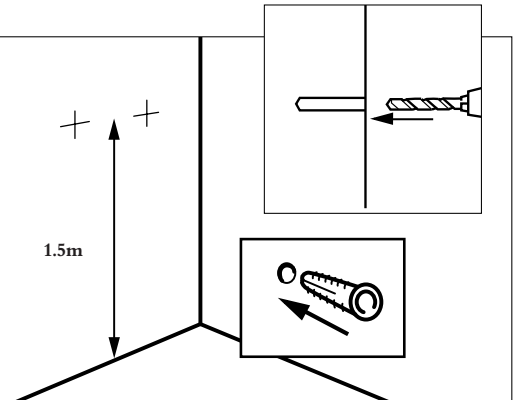
Lift up panel and remove two screws to dismantle unit.

2



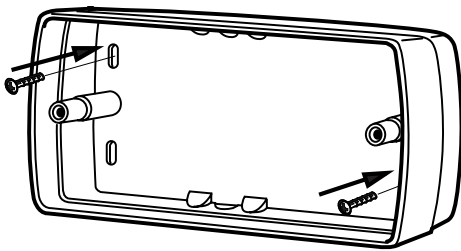
Push out backplate box cable entry using a screwdriver.

3



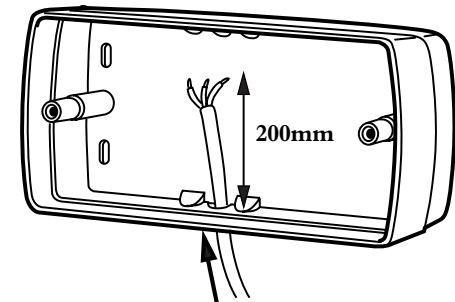
Spot through backplate box and drill and plug the wall

4



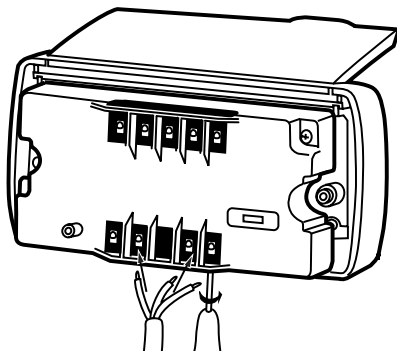
Fix backplate box to the prepared wall

5



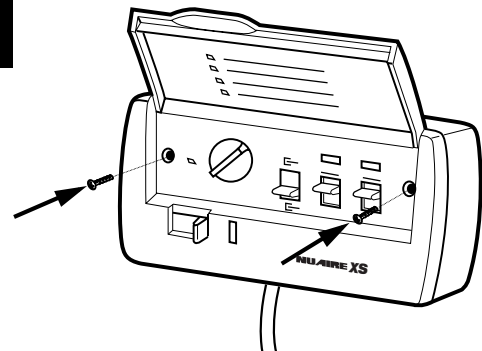
Feed approx. 200mm of supply cable into the box

6



Connect the end of the cable into the control block

7



Fit the control into the backplate box and secure.  
Test the installation

# Installation & Maintenance **XS** WINDOW FAN KITS

## Accessories

### Window Installation Accessories

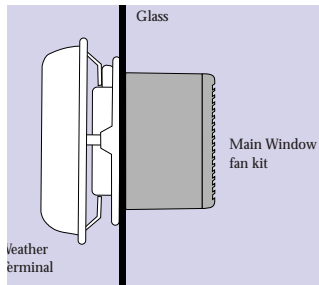
#### Weather Terminal.

For use in conjunction with Window fan kits. Used for exposed site window installations, comprising one weather terminal. Manufactured from Styrosun high impact polystyrene material.



Order Code XS-WT6  
Dimensions: 360 x 360 x 170  
Order Code XS-WT9  
Dimensions: 425 x 425 x 180  
Order Code XS-WT12  
Dimensions: 506 x 506 x 185

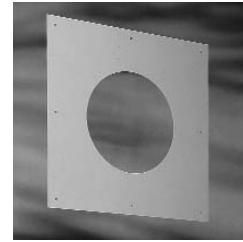
Unit directly replaces the outside grille assembly and is supplied with installation details.



Weather terminal shown installed.

#### Wall Fixing Plate

Used for thin wall applications. The Wall Fixing Plate is fixed to the aperture using 4 screws.



The Spacer and the Outside Grille clamp together either side of the Wall Fixing Plate to support the Fan assembly.

## 3 Year Warranty

The three year warranty starts from the date of delivery covering faulty materials or workmanship and includes parts and labour for the first year.

The labour element is subject to full, free and safe access to the equipment as recommended by the CDM regulations. The remaining two years covers replacement parts only.

### TERMS

This warranty applies to units installed and used in the United Kingdom. The equipment will be repaired or replaced at NuAire's cost provided that the appliance:

1. Has been installed and used in accordance with the fitting and wiring instructions supplied with each unit.
2. Has not been connected to an unsuitable electrical supply. (The correct supply voltage is shown on the appliance rating label attached to the unit).
3. Has not been modified or repaired by persons not authorised by NuAire.
4. A unit returned to NuAire should be suitably protectively packaged and clearly marked with the 'returns number' obtained from NuAire prior to posting.

### NB

If you have any comments or queries on any of our products or services please write to the Marketing Services Manager at the main address opposite

*Technical or commercial considerations may, from time to time, make it necessary to alter the design, performance and dimensions of equipment and the right is reserved to make such changes without prior notice.*

## Maintenance

Periodically, at least once a year, or more frequently in case of heavy use, remove the dirt and encrustation from the grille(s) fan impeller and motor casing.

Ensure the impeller is not cracked or deformed and is able to rotate freely and without oscillation.

## After Sales Support

As a manufacturer NuAire is aware that time is important. In the event of a breakdown of this equipment, it should be adequately packaged and returned to NuAire. **IMPORTANT!** Please telephone NuAire before posting your unit. We will give you a returns number to identify your package.

We will endeavour to repair or replace it within five working days of receipt. See our warranty terms.

# NUAIRE

Western Industrial Estate, Caerphilly,  
Mid Glam CF83 1XH United Kingdom.  
Telephone: 02920 885911 Facsimile: 02920 887033,  
Email@nuaire.co.uk



EC Declaration of Conformity  
We declare that type XS fan  
conforms to: 89/336/EEC  
73/23/EEC

Colin Biggs  
Technical Director  
W Glover  
Manufacturing Director

Leaflet No. 671050

GP 215